

# 19 立面圖 ELEVATION PLAN

## 第1座

期數的認可人士已證明本圖所顯示的立面：

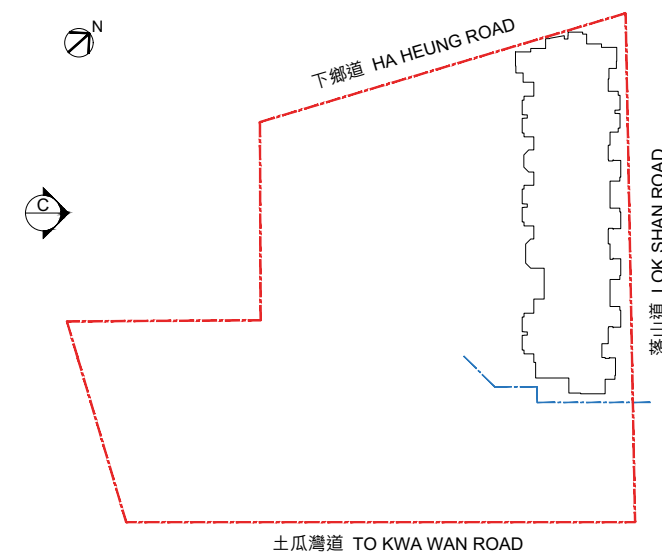
1. 以2025年7月14日的情況為準的期數的經批准的建築圖則為基礎擬備；及
2. 大致上與期數的外觀一致。

## Tower 1

Authorized Person for the Phase has certified that elevations shown on these plans:

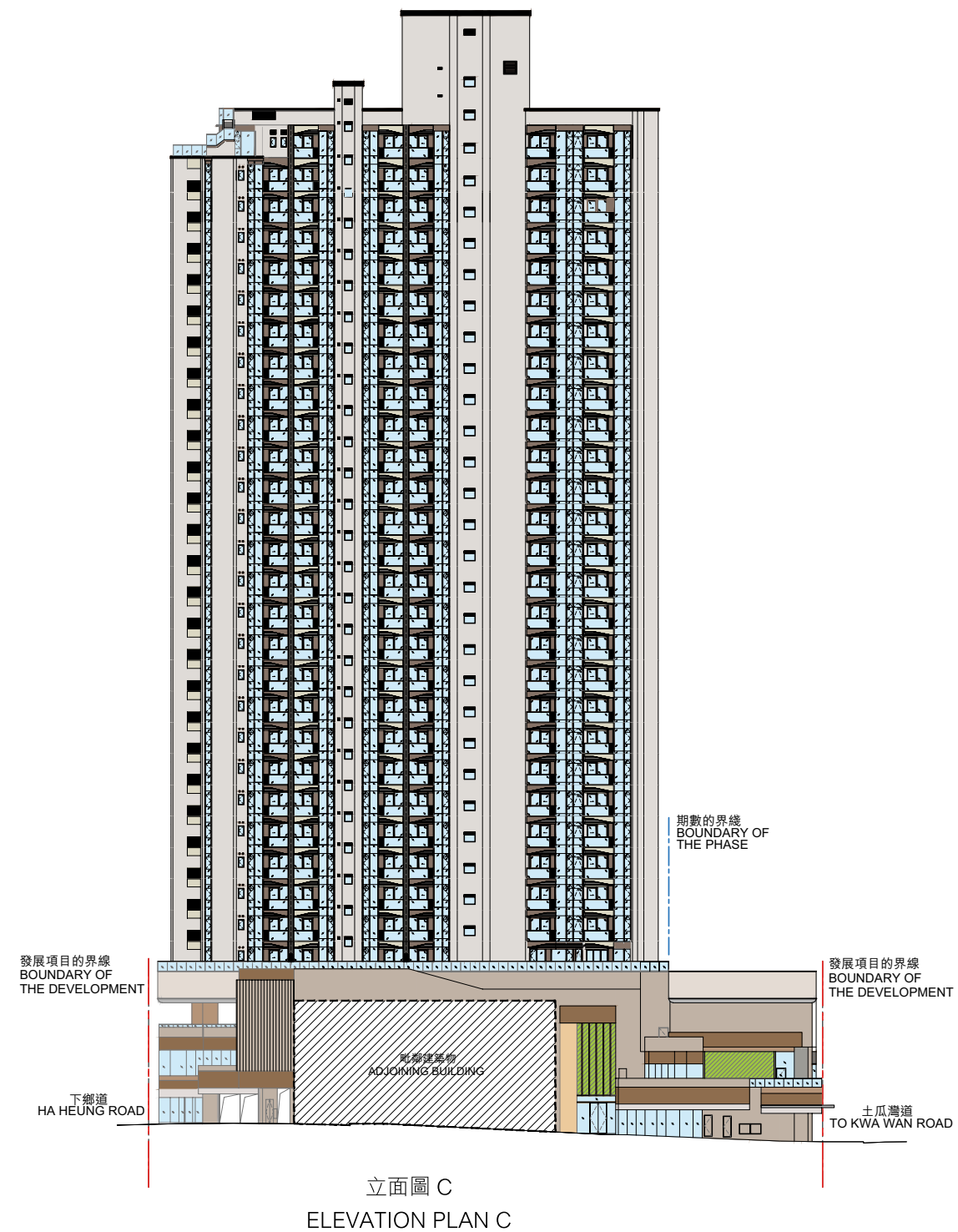
1. are prepared on the basis of the approved building plans for the Phase as of 14th July 2025; and
2. are in general accordance with the outward appearance of the Phase.

## 索引圖 KEY PLAN



## 圖例 Legend

- 發展項目的邊界線  
Boundary of the Development
- 期數的邊界線  
Boundary of the Phase



# 19 立面圖 ELEVATION PLAN

## 第1座

期數的認可人士已證明本圖所顯示的立面:

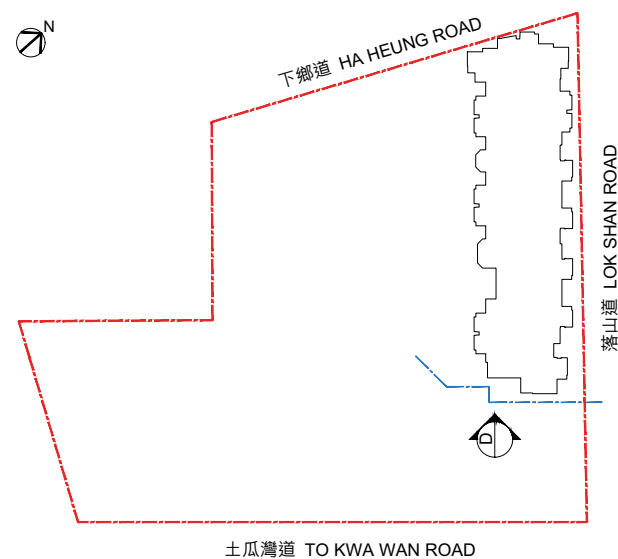
1. 以2025年7月14日的情況為準的期數的經批准的建築圖則為基礎擬備；及
2. 大致上與期數的外觀一致。

## Tower 1

Authorized Person for the Phase has certified that elevations shown on these plans:

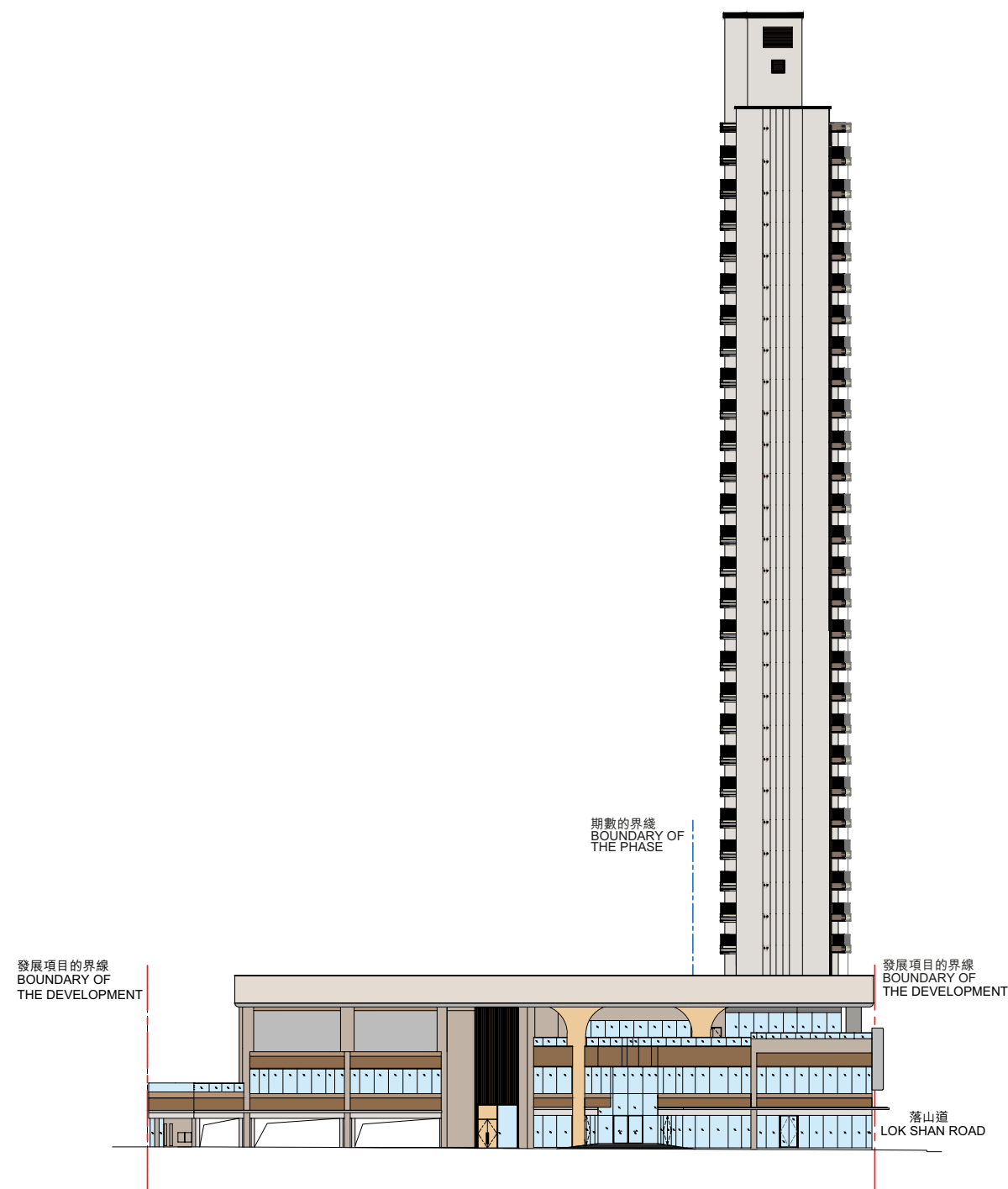
1. are prepared on the basis of the approved building plans for the Phase as of 14th July 2025; and
2. are in general accordance with the outward appearance of the Phase.

## 索引圖 KEY PLAN



## 圖例 Legend

- 發展項目的邊界線  
Boundary of the Development
- 期數的邊界線  
Boundary of the Phase



立面圖 D  
ELEVATION PLAN D

公用設施 Common Facilities	有上蓋遮蓋之面積 Covered Area		沒有上蓋遮蓋之面積 Uncovered Area		總面積 Total Area	
	平方米 sq. m.	平方呎 sq. ft.	平方米 sq. m.	平方呎 sq. ft.	平方米 sq. m.	平方呎 sq. ft.
住客會所(包括供住客使用的任何康樂設施) Residents' Clubhouse (including any recreational facilities for residents' use)	1254.129	13499	不適用 Not Applicable		1254.129	13499
位於期數中的建築物的天台或在天台和最低一層住宅樓層之間的任何一層的、供住客使用的公用花園或遊樂地方 (不論是稱為公用空中花園或其他名稱) Communal garden or play area for residents' use on the roof, or on any floor between the roof and the lowest residential floor, of a building in the Phase (whether known as a communal sky garden or otherwise)	不適用 Not Applicable					
位於期數中的建築物的最低一層住宅樓層以下的、供住客使用的公用花園或遊樂地方 (不論是稱為有蓋及園景的遊樂場或有其他名稱) Communal garden or play area for residents' use below the lowest residential floor of a building in the Phase (whether known as a covered and landscaped play area or otherwise)	623.766	6714	752.695	8102	1376.461	14816

備註：

1. 以平方呎顯示之面積均依據1平方米 = 10.764平方呎換算，並四捨五入至整數。

2. 以上「住客會所」的面積是供整個發展項目(由第一期及第二期組成)使用。各期數內的公用設施為供所有期數的住客及其訪客使用的公用及共享設施。詳情請參閱公契。

3. 以上「位於期數中的建築物的最低一層住宅樓層以下的、供住客使用的公用花園或遊樂地方」的面積是供整個發展項目(由第一期及第二期組成)使用。各期數內的公用設施為供所有期數的住客及其訪客使用的公用及共享設施。詳情請參閱公契。

4. 住宅康樂設施有上蓋遮蓋之面積為核准圖則內獲建築事務監督豁免之住宅康樂設施面積及住宅康樂設施建築面積。

Notes:

1. Areas in square feet are converted at a rate of 1 square metre to 10.764 square feet and rounded to the nearest integer.

2. The area of “Residents’ Clubhouse” as specified above is for serving the whole Development comprising Phase 1 and Phase 2. Common facilities of all phases are intended for the common use and the benefit of the owner of residential units and their bona fide visitors of all phases. Please refer to the Deed of Mutual Covenant for details.

3. The area of “Communal garden or play area for residents’ use below the lowest residential floor of a building in the Phase” as specified above is for serving the whole Development comprising Phase 1 and Phase 2. Common facilities of all phases are intended for the common use and the benefit of the owner of residential units and their bona fide visitors of all phases. Please refer to the Deed of Mutual Covenant for details.

4. The covered area of “Residents’ Clubhouse” include both the exempted residents’ recreational facilities area permitted by the Building Authority and the accountable residents’ recreational facilities area as shown on the approved building plans.

## 21 閱覽圖則及公契 INSPECTION OF PLANS AND DEED OF MUTUAL COVENANT

1. 備有關乎本發展項目的分區計劃大綱圖的文本供閱覽的互聯網網站的網址為 [www.ozp.tpb.gov.hk](http://www.ozp.tpb.gov.hk)
2. (a) 以下文件的文本存放在發售有關住宅物業的售樓處，以供閱覽 —  
本住宅物業的每一公契在將本住宅物業提供出售的日期的最新擬稿。  
(b) 無須為閱覽付費。

1. Copies of outline zoning plans relating to the Development are available for inspection at [www.ozp.tpb.gov.hk](http://www.ozp.tpb.gov.hk)
2. (a) Copies of the following document are available for inspection at the place at which the residential property is offered to be sold —  
the latest draft of every deed of mutual covenant as in respect of the residential property at the date on which the residential property is offered to be sold.  
(b) The inspection is free of charge.



1. 外部裝修物料

		描述		
(a)	外牆	裝修物料的類型	基座：	玻璃牆、瓷磚、綠化牆、金屬飾板、金屬百葉、金屬格柵及石材飾板
			住宅大樓：	玻璃幕牆、瓷磚、金屬飾板、金屬百葉、金屬格柵、玻璃飾板及窗
(b)	窗	框的用料	氟化碳噴塗鋁質窗框	
		玻璃的用料	所有住宅單位之窗戶為玻璃	
(c)	窗台	窗台的用料	不適用	
		窗台板的裝修物料	不適用	
(d)	花槽	裝修物料的類型	基座：	天然石/瓷磚和金屬飾板
			住宅大樓：	瓷磚
(e)	陽台 / 露台/ 工作平台 / 空調機平台	裝修物料的類型	露台/工作平台/ 空調機平台	裝有夾層玻璃欄河及金屬欄河
			地台	瓷磚
			牆身	瓷磚及金屬飾板
			天花	裝有金屬假天花
			陽台	不適用
		是否有蓋	是	
(f)	乾衣設施(3樓的H、J、K、 L、M、 N、P單位及33樓A單位除外 )	類型	晾衣桿	
		用料	金屬	
	乾衣設施(適用於3樓的H、J、K、 L、M、N、P單位及33樓A單位 )	類型	不適用	
		用料	不適用	

2. 室內裝修物料

			牆壁		地板	天花板
(a)	大堂	地下住宅入口大堂裝修物料的類型	天然石、鏡子、金屬及木皮飾板		天然石	木皮飾面及金屬
		公用升降機大堂裝修物料的類型	木皮飾面、牆紙、金屬及膠板飾面		瓷磚	石膏板假天花表面髹上乳膠漆
			牆壁		天花板	
(b)	內牆及天花板	客廳裝修物料的類型	乳膠漆、膠板飾面及鏡子(3樓至32樓A單位除外) 乳膠漆飾面(適用於3樓至32樓A單位)		乳膠漆	
		飯廳裝修物料的類型				
		睡房裝修物料的類型	乳膠漆		乳膠漆	
			地板		牆腳線	
(c)	內部地板	客廳裝修物料的類型	瓷磚(33樓A單位除外) 天然石(適用於33樓A單位)		油漆木牆腳線	
		飯廳裝修物料的類型				
		睡房裝修物料的類型	瓷磚及隔音墊(33樓A單位除外) 複合木地板(適用於33樓A單位)		油漆木牆腳線	
			牆壁		地板	天花板
(d)	浴室	裝修物料的類型	外露牆身鋪砌瓷磚 (33樓A單位主人浴室、浴室1及浴室2除外) 外露牆身鋪砌瓷磚及人造石 (適用於33樓A單位主人浴室、浴室1及浴室2)		瓷磚	石膏板假天花表面髹上乳膠漆
		牆壁的裝修物料是否鋪至天花板	裝修物料鋪至假天花底			
			牆壁	地板	天花板	灶台
(e)	廚房 / 開放式廚房	裝修物料的類型	開放式廚房：外露牆身鋪砌膠板及人造石 廚房：外露牆身鋪砌瓷磚及人造石	開放式廚房：瓷磚 廚房：天然石材	石膏板假天花表面髹上乳膠漆	人造石
		牆壁的裝修物料是否鋪至天花板	裝修物料鋪至假天花底			

3. 室內裝置

			用料	裝修物料	配件
(a)	門	單位大門	防火實心木門	膠板飾面	指紋門鎖、嵌入式門鼓、防煙條及門鉸及防盜眼
		露台 / 工作平台/ 空調機平台門	鋁框趟門	玻璃	門鎖
		平台門(3樓的A至H和K至N及P單位)	鋁框趟門	玻璃	門鎖
		平台門(3樓的H單位)	鋁框掩門及鋁框趟門	玻璃	門鎖
		平台門(3樓的J單位及33樓A單位)	鋁框趟摺門	玻璃	門鎖
		睡房門	鑽孔實心木掩門(5樓至32樓J單位睡房2及33樓H單位睡房2除外)	膠板飾面	金屬門框連橡膠墊、門鎖及門擋
			空心木趟門(適用於5樓至32樓J單位睡房2及33樓H單位睡房2)	膠板飾面	門柄及門鎖
		浴室門	鑽孔實心木掩門(33樓A單位浴室3除外) 鋁框玻璃趟摺門(適用於33樓A單位浴室3)	膠板飾面及金屬百葉(33樓A單位浴室3除外) 磨砂玻璃及金屬百葉(適用於33樓A單位浴室3)	金屬門框連橡膠墊、門鎖及門擋(33樓A單位浴室3除外) 門柄及門鎖(適用於33樓A單位浴室3)
		廚房門	防火實心木掩門配防火玻璃視窗	膠板飾面	門柄, 嵌入式門鼓及門擋
		儲物室門	空心木趟門	膠板飾面	門柄及門鎖
			裝置及設備	類型	用料
(b)	浴室	(i) 裝置及設備的類型及用料	櫃	面盆櫃台面	實心面材(33樓A單位除外) 人造石(適用於33樓A單位主人浴室, 浴室1及浴室2) 不適用(適用於33樓A單位浴室3)
				面盆櫃	膠板飾面(33樓A單位浴室3除外) 不適用(適用於33樓A單位浴室3)
				鏡櫃	鏡櫃配鏡面板連玻璃層板(33樓A單位浴室3除外) 不適用(適用於33樓A單位浴室3)
				鏡子	鏡(適用於33樓A單位浴室3)
			潔具	洗手盆水龍頭、淋浴水龍頭及花灑	黃銅
				廁紙架	金屬
				浴袍掛鉤	金屬
				洗手盆	實心面材(33樓A單位除外) 人造石(適用於33樓A單位主人浴室, 浴室1及浴室2) 陶瓷(適用於33樓A單位浴室3)
				座廁	搪瓷
			浴室設備	隨樓附送之設備及品牌, 請參閱「設備說明表」	
		(ii) 供水系統的類型及用料		冷水喉採用銅喉及熱水喉採用配有隔熱絕緣保護之銅喉	
		(iii) 沐浴設施的類型及用料 (包括花灑或浴缸 ,如適用的話)	花灑	花灑套裝	黃銅
			浴缸	浴缸(適用於33樓A單位主人浴室)	瓷釉壓制鋼
				水龍頭	黃銅
		(iv) 浴缸大小(如適用的話)		1400毫米(長)x700毫米(闊)x410毫米(深)	

3. 室內裝置

			用料		
(c)	廚房 / 開放式廚房	(i) 洗滌盆的用料	石英複合材料		
		(ii) 供水系統的用料	冷水喉採用銅喉及熱水喉採用配有隔熱絕緣保護之銅喉		
			用料	裝修物料	
		(iii) 廚櫃的用料及裝修物料	木製廚櫃配木製門板及玻璃門	膠板飾面及人造石台面	
		(iv) 所有其他裝置及設備的類型	消防裝置及設備	開放式廚房內或附近的天花裝置煙霧探測器及消防花灑頭	
			其他裝置	黃銅洗滌盆水龍頭	
			其他設備	隨樓附送之設備及品牌，請參閱「設備說明表」	
			裝置	類型	用料
(d)	睡房	裝置(包括嵌入式衣櫃)	嵌入式衣櫃	不適用	不適用
			其他裝置	不適用	不適用
(e)	電話	接駁點的位置及數目	請參閱「住宅單位機電裝置位置及數量說明表」		
(f)	天線	接駁點的位置及數目	請參閱「住宅單位機電裝置位置及數量說明表」		
(g)	電力裝置	(i) 供電附件(包括安全裝置)	供電附件	提供電掣及插座之面板	
			安全裝置	(a) 單相電力並裝妥微型斷路器(33樓A單位除外) (b) 三相電力並裝妥微型斷路器(適用於33樓A單位)	
		(ii) 導管是隱藏或外露	導管是部分隱藏部分外露 <sup>1</sup>		
		(iii) 電插座及空調機接駁點的位置及數目	請參閱「住宅單位機電裝置位置及數量說明表」		

3. 室內裝置

			裝置及設備	類型	用料
(h)	氣體供應	類型	煤氣		
		系統	所有單位提供煤氣喉接駁煤氣煮食爐及煤氣熱水爐		
		位置	請參閱「住宅單位機電裝置位置及數量說明表」		
(i)	洗衣機接駁點	位置	請參閱「住宅單位機電裝置位置及數量說明表」		
		設計	設有洗衣機來、去水接駁喉位		
(j)	洗碗碟機接駁點	位置	請參閱「住宅單位機電裝置位置及數量說明表」		
		設計	設有洗碗碟機來、去水接駁喉位		
(k)	供水	(i) 水管的用料	冷水喉採用銅喉及熱水喉採用配有隔熱絕緣保護之銅喉		
		(ii) 水管是隱藏或外露	水管是部分隱藏及部分外露 <sup>2</sup>		
		(iii) 有否熱水供應	廚房,開放式廚房及浴室供應熱水		

備註：

1. 除部分隱藏於混凝土內之導管外，其他部分的導管均為外露。外露的導管可能被假天花、假陣、貯存櫃、覆面、非混凝土間牆、指定之槽位或其他物料遮蓋或隱藏。

2. 除部分隱藏於混凝土內之水管外，其他部分的水管均為外露。外露的水管可能被假天花、假陣、貯存櫃、覆面、非混凝土間牆、指定之槽位或其他物料遮蓋或隱藏。

4. 雜項

		描述	住宅		
(a)	升降機	(i) 品牌名稱及產品型號	品牌名稱	日立電梯	
			產品型號	L1–L3:MCA–900–CO180	
		(ii) 升降機的數目及到達的樓層	升降機的數目	3	
			到達的樓層	1號及2號升降機：地下、2樓至3樓、5樓至12樓、15樓至23樓及25樓至33樓 3號升降機：地下至3樓、5樓至12樓、15樓至23樓及25樓至33樓	
(b)	信箱	用料	不銹鋼		
(c)	垃圾收集	(i) 垃圾收集的方法	由清潔工人收集垃圾		
		(ii) 垃圾房的位置	垃圾及物料回收室位於每層住宅樓層 垃圾及物料回收房設於地下		
			水錶	電錶	氣體錶
(d)	水錶、電錶及氣體錶	(i) 位置	每層之公共水錶房	每層之公共電錶房	(a) 露台/工作平台/空調機平台高位(3樓所有單位及33樓A單位除外) (b) 平台高位(適用於3樓所有單位) (c) 廚房高位(適用於33樓A單位)
		(ii) 就住宅單位而言是獨立抑或公用的錶	獨立	獨立	獨立

備註：賣方承諾如該期數沒有安裝指明的品牌名稱或產品型號的升降機或設備，便會安裝品質相若的升降機或設備。

5. 保安設施

	描述	
保安系統及設備	入口通道控制及保安系統	地下住宅入口大堂及升降機設有智能讀咭機(八達通及二維碼)。
	閉路電視	地下住宅入口大堂、樓梯出口及所有升降機內均設有閉路電視系統直接連接管理處。
嵌入式的裝備的細節	各住宅單位均設有對講機並連接地下住宅入口大堂管理櫃檯。	
嵌入式裝備的位置	請參閱「住宅單位機電裝置位置及數量說明表」	

1. EXTERIOR FINISHES

		Description		
(a)	External wall	Type of finishes	Podium:	Glass wall, glazed ceramic tiles, green wall, metal cladding, metal louver, metal grille and stone cladding
			Residential tower:	Curtain wall, window, glazed ceramic tiles, metal cladding, metal louver, metal grille and glass cladding
(b)	Window	Material of frame	Fluorocarbon coated aluminium frame	
		Material of glass	Glass for windows in all residential units	
(c)	Bay window	Material	Not applicable	
		Window sill finishes	Not applicable	
(d)	Planter	Type of finishes	Podium:	Natural granite/ porcelain tiles and metal cladding
			Tower:	Procelain tiles
(e)	Verandah or Balcony / Utility Platform / A/C Platform	(i)Type of finishes	Balcony / Utility Platform / A/C Platform:	Installed with laminated glass balustrade and metal balustrade
			Floor:	Finished with ceramic tiles
			Wall:	Glazed ceramic tiles and metal cladding
			Ceiling:	Finished with matel false ceiling
			Verandah:	Not applicable
		(ii)Whether it is covered	Yes	
(f)	Drying facilities for clothing (Except 3/F Flat H, J, K, L, M, N, P and 33/F Flat A)	Type	Clothes drying rods	
		Material	Metal	
	Drying facilities for clothing (For 3/F Flat H, J, K, L, M, N, P and 33/F Flat A)	Type	Not applicable	
		Material	Not applicable	



### 2. INTERIOR FINISHES

			Wall		Floor	Ceiling
(a)	Lobby	G/F residential entrance lobby finishes	Natural stone, mirror, metal and timber veneer		Natural stone	Timber veneer and metal
		Common lift lobby finishes	Timber veneer, wall paper, metal, and plastic laminate		Tiles	Gypsum board false ceiling with emulsion paint
			Wall		Ceiling	
(b)	Internal wall and ceiling	Living room finishes	Emulsion paint, plastic laminate and mirror (Except Flat A on 3/F - 32/F) Emulsion paint (For Flat A on 3/F - 32/F)		Emulsion paint	
		Dining room finishes				
		Bedroom finishes	Emulsion paint		Emulsion paint	
			Floor		Skirting	
(c)	Internal floor	Material of living room	Tiles (Except Flat A on 33/F) Natural stone (For Flat A on 33/F)		Timber skirting in paint finish	
		Material of dining room				
		Material of bedroom	Tiles and acoustic mat (Except Flat A on 33/F) Engineered wood flooring (For Flat A on 33/F)		Timber skirting in paint finish	
			Wall		Floor	Ceiling
(d)	Bathroom	(i) Type of finishes	Tiles to exposed surface (Except Master Bathroom, Bathroom 1 and Bathroom 2 of Flat A on 33/F) Reconstituted stone and tiles to exposed surface (For Master Bathroom, Bathroom 1 and Bathroom 2 of Flat A on 33/F)		Tiles	Gypsum board false ceiling with emulsion paint
		(ii) Whether the wall finishes run up to ceiling	Run up to false ceiling level			
			Wall	Floor	Ceiling	Cooking Bench
(e)	Kitchen / Open Kitchen	(i) Type of finishes	Open Kitchen: Plastic laminate and Reconstituted stone to exposed surface	Open Kitchen: Tiles Enclosed Kitchen: Natural stone	Gypsum board false ceiling with emulsion paint	Reconstituted stone
			Enclosed Kitchen: Tiles and Reconstituted stone to exposed surface			
		(ii) Whether the wall finishes run up to ceiling	Run up to false ceiling level			

3. INTERIOR FITTINGS

			Material	Finishes	Accessories
(a)	Doors	Main entrance door	Fire-rated solid core timber door	Plastic laminate	Fingerprint door lock, concealed door closer, smoke seal, door hinges and viewer
		Door to balcony / Utility platform / A/C Platform	Aluminium frame sliding door	Glass	Lockset
		Flat roof door (3/F Flat A to H, Flat K to N and Flat P)	Aluminium frame sliding door	Glass	Lockset
		Flat roof door (3/F Flat H)	Aluminium Frame Swing Door and Aluminium Frame Sliding Door	Glass	Lockset
		Flat roof door (3/F Flat J and 33/F Flat A)	Aluminium frame bi-folding door	Glass	Lockset
		Bedroom door	Perforated solid core timber swing door (Except Bedroom 2 of Flat J on 5/F to 32/F and Bedroom 2 of Flat H on 33/F)	Plastic laminate	Metal door frame with rubber gasket, lockset and door stopper
			Hollow core timber sliding door (For Bedroom 2 of Flat J on 5/F to 32/F and Bedroom 2 of Flat H on 33/F)	Plastic laminate	Door handle and lockset
		Bathroom door	Perforated solid core timber swing door (Except Bathroom 3 of Flat A on 33/F)	Plastic laminate and metal louver (Except Bathroom 3 of Flat A on 33/F)	Metal door frame with rubber gasket, lockset and door stopper (Except Bathroom 3 of Flat A on 33/F)
			Aluminium framed glass bi-folding door (For Bathroom 3 of Flat A on 33/F)	Frosted glass and metal louver (For Bathroom 3 of Flat A on 33/F)	Door handle and lockset (For Bathroom 3 of Flat A on 33/F)
		Kitchen door	Solid core fire rated timber swing door with fire rated glass vision panel	Plastic laminate	Door handle, concealed door closer and door stopper
		Store room door	Hollow core timber sliding door	Plastic laminate	Door handle and lockset

3. INTERIOR FITTINGS

		Description	Fittings & Equipment	Type	Material	
(b)	Bathroom	(i) Type and material of fittings and equipment	Cabinet	Countertop of basin cabinet	Solid surfacing (Except Flat A on 33/F) Reconstituted stone (For Master Bathroom, Bathroom 1 and Bathroom 2 of Flat A on 33/F) Nil (For Bathroom 3 of Flat A on 33/F)	
				Basin cabinet	Plastic laminate (Except Bathroom 3 of Flat A on 33/F) Nil (For Bathroom 3 of Flat A on 33/F)	
				Mirror cabinet	Mirror cabinet with mirror panel and glass shelves (Except Bathroom 3 of Flat A on 33/F) Nil (For Bathroom 3 of Flat A on 33/F)	
				Mirror	Mirror (For Bathroom 3 of Flat A on 33/F)	
			Bathroom fittings	Basin mixer, shower mixer and hand shower	Brass	
				Toilet paper holder	Metal	
				Robe hook	Metal	
				Wash basin	Solid surfacing (Except Flat A on 33/F) Reconstituted stone (For Master Bathroom, Bathroom 1 and Bathroom 2 of Flat A on 33/F) Ceramics (For Bathroom 3 of Flat A on 33/F)	
				Water closet	Vitreous china	
			Bathroom appliances	For the appliances provision and brand name, please refer to 'Appliances Schedule'		
		(ii) Type and material of water supply system			Copper pipes for cold water supply and copper pipes with thermal insulation for hot water supply	
		(iii) Type and material of bathing facilities (including shower or bath tub, if applicable)	Shower	Shower mixer and shower set	Brass	
			Bath tub	Bathtub (For Master Bathroom of Flat A on 33/F)	Enamel steel	
				Bathtub mixer	Brass	
		(iv) Size of bath tub (if applicable)			1400mm(L) x 700mm(W) x 410mm(D)	

3. INTERIOR FITTINGS

			Material		
(c)	Kitchen / Open kitchen	(i) Material of sink unit	Composite granite material		
		(ii) Material of water supply system	Copper pipes for cold water supply and copper pipes with thermal insulation for hot water supply		
			Material	Finishes	
		(iii) Material and finishes of kitchen cabinet	Timber cabinet with wooden and glass door	Plastic laminate and reconstituted stone counter-top	
		(iv) Type of all other fittings and equipment	Fire service installations and equipment	Ceiling-mounted smoke detector and sprinkler head are fitted in or near open kitchen	
			Other fittings	Brass sink mixer	
			Other equipment	For the appliances provision and brand name, please refer to 'Appliances Schedule'	
			Fittings	Type	Material
(d)	Bedroom	Fittings (including built-in wardrobe)	Built-in wardrobe	Nil	Nil
			Other fittings	Nil	Nil
(e)	Telephone	Location and number of connection points	Please refer to the "Schedule for the Location and Number of Mechanical and Electrical Provisions of Residential Units"		
(f)	Aerials	Location and number of connection points	Please refer to the "Schedule for the Location and Number of Mechanical and Electrical Provisions of Residential Units"		
			Fittings	Type	
(g)	Electrical installations	(i) Electrical fittings (including safety devices)	Electrical fittings	Faceplate for all switches and power sockets	
			Safety devices	(a) Single-phase electricity supply with miniature circuit breaker distribution board (Except Flat A on 33/F) (b) Three-phase electricity supply with miniature circuit breaker distribution board (For Flat A on 33/F)	
		(ii) Whether conduits are concealed or exposed	Conduits are partly concealed and partly exposed <sup>1</sup>		
		(iii) Location and number of power points and air-conditioner points	Please refer to the "Schedule for the Location and Number of Mechanical and Electrical Provisions of Residential Units"		

3. INTERIOR FITTINGS

			Fittings
(h)	Gas supply	Type	Towngas
		System	Gas supply pipe is provided and connected to gas cooker and gas water heater for all flats
		Location	Please refer to the "Schedule for the Location and Number of Mechanical and Electrical Provisions of Residential Units"
(i)	Washing machine connection point	Location	Please refer to the "Schedule for the Location and Number of Mechanical and Electrical Provisions of Residential Units"
		Design	Drain point and water point are provided for washing machine
(j)	Dish Washer connection point	Location	Please refer to the "Schedule for the Location and Number of Mechanical and Electrical Provisions of Residential Units"
		Design	Drain point and water point are provided for dish washer
(k)	Water supply	(i) Material of water pipes	Copper pipes for cold water supply and copper pipes with thermal insulation for hot water supply
		(ii) Whether water pipes are concealed or exposed exposed	Water pipes are partly concealed and partly exposed <sup>2</sup>
		(iii) Whether hot water is available	Hot water supply is provided to the kitchen, open kitchen and bathroom

Notes: 1. Other than those parts of the conduits concealed within concrete, the rest of them are exposed. The exposed conduits may be covered or hidden by false ceilings, bulkheads, cabinets, claddings, non-concrete partition walls, designated pipe ducts or other materials.

2. Other than those parts of the water pipes concealed within concrete, the rest of them are exposed. The exposed water pipes may be covered or hidden by false ceilings, bulkheads, cabinets, claddings, non-concrete partition walls, designated pipe ducts or other materials.

4. MISCELLANEOUS

		Description			Residential
(a)	Lifts	(i) Brand name and model number	Brand name		Hitachi
			Model number		L1-L3:MCA-900-CO180
		(ii) Number and floors served by them	Number of lifts		3
			Floor served by the lifts		Lift No.1 & 2: G/F, 2/F-3/F, 5/F-12/F, 15/F-23/F, 25/F-33/F Lift No.3: G/F-3/F, 5/F-12/F, 15/F-23/F, 25/F-33/F
(b)	Letter box	Material	Stainless steel		
(c)	Refuse collection	(i) Means of refuse collection	Refuse will be collected by cleaners		
		(ii) Location of refuse room	Refuse storage and material recovery room is located at each residential floor Refuse storage and material recovery chamber is located at G/F		
			Water Meter	Electricity Meter	Gas Meter
(d)	Water meter, electricity meter and gas meter	(i) Location	Common water meter room on each floor	Common electric meter room on each floor	(a) High level of balcony/ utility platform/ A/C platform (Except all flats on 3/F and Flat A on 33/F) (b) High level of flat roof (For all flats on 3/F) (c) High level of kitchen (For Flat A on 33/F)
		(ii) Whether they are separate or communal meters for residential properties	Separate meter	Separate meter	Separate meter

Notes: 1. The vendor undertakes that if lifts or appliances of the specified brand name or model number are not installed in the Phase, lifts or appliances of comparable quality will be installed.

5. SECURITY FACILITIES

	Description	
Security system and equipment	Access Control	Access card readers (Octopus card and QR code) are installed at the residential entrance lobby on G/F and lifts.
	CCTV	CCTV system is installed at residential entrance lobby on G/F, staircase exits and all lifts connecting directly to the management office.
Details of built-in provisions	Door phone in each residential unit is connected to the caretaker's counter at the residential entrance lobby on G/F	
Location of built-in provisions	Please refer to the "Schedule for the Location and Number of Mechanical and Electrical Provisions of Residential Units"	



6. 設備說明表 Appliances Schedule

位置 Location	設備 Appliance	品牌 Brand	型號 Model No.	第1座 Tower 1													
				3樓 3/F													
				A	B	C	D	E	F	G	H	J	K	L	M	N	P
客廳 / 飯廳 Living Room / Dining Room	多聯形分體冷氣室內機 Multi Split Type Air Conditioning Indoor Unit	東芝 Toshiba	RAS-M13N4KCV	-	-	-	-	-	1	1	-	-	1	1	1	1	-
	多聯形分體冷氣室內機 Multi Split Type Air Conditioning Indoor Unit	東芝 Toshiba	RAS-M22N4KCV	-	1	1	1	1	-	-	1	-	-	-	-	-	1
	可變冷媒流量冷氣室內機 VRF System Air Conditioning Indoor Unit	東芝 Toshiba	MMK-UP0181HP-E	1	-	-	-	-	-	-	-	-	-	-	-	-	-
	可變冷媒流量冷氣室內機 VRF System Air Conditioning Indoor Unit	東芝 Toshiba	MMK-UP0241HP-E	-	-	-	-	-	-	-	-	1	-	-	-	-	-
	嵌入式雪櫃 Built-in Fridge	Philco	PBTR122	-	-	-	-	-	1	1	-	-	1	1	1	1	-
	嵌入式雪櫃 Built-in Fridge	Philco	PBF7320NF	1	1	1	1	1	-	-	1	-	-	-	-	-	1
	嵌入式蒸焗爐 Built-in Steam Oven	西門子 Siemens	CS589ABS0H	1	1	1	1	1	1	1	1	1	1	1	1	1	1
	嵌入式洗碗碟機 Built-in Dish Washer	西門子 Siemens	SN67ZX86DM	1	-	-	-	-	-	-	-	1	-	-	-	-	-
主人睡房 Master Bedroom	可變冷媒流量冷氣室內機 VRF System Air Conditioning Indoor Unit	東芝 Toshiba	MMK-UP0091HP-E	-	-	-	-	-	-	-	-	1	-	-	-	-	-

備註： 1. 賣方承諾如期數中沒有安裝指明的品牌名稱或產品型號的升降機或設備，便會安裝品質相若的升降機或設備。 2. 所有冷氣機只提供製冷功能。 3. 上表 "-" 代表「不提供」或「不適用」

Notes： 1. The vendor undertakes that if lifts or appliances of the specified brand name or model number are not installed in the Phase, lifts or appliances of comparable quality will be installed.  
2. All Air Conditioning Units provide cooling function only 3. The symbol "-" as shown in the above table denotes "Not provided" or "Not applicable"

6. 設備說明表 Appliances Schedule

位置 Location	設備 Appliance	品牌 Brand	型號 Model No.	第1座 Tower 1													
				3樓 3/F													
				A	B	C	D	E	F	G	H	J	K	L	M	N	P
睡房 1 Bedroom 1	多聯形分體冷氣室內機 Multi Split Type Air Conditioning Indoor Unit	東芝 Toshiba	RAS-M10N4KCV	-	1	1	1	1	1	1	1	-	1	1	1	1	1
	可變冷媒流量冷氣室內機 VRF System Air Conditioning Indoor Unit	東芝 Toshiba	MMK-UP0091HP-E	1	-	-	-	-	-	-	-	1	-	-	-	-	-
睡房 2 Bedroom 2	多聯形分體冷氣室內機 Multi Split Type Air Conditioning Indoor Unit	東芝 Toshiba	RAS-M10N4KCV	-	1	1	1	1	-	-	1	-	-	-	-	-	1
	可變冷媒流量冷氣室內機 VRF System Air Conditioning Indoor Unit	東芝 Toshiba	MMK-UP0091HP-E	1	-	-	-	-	-	-	-	1	-	-	-	-	-
睡房 3 Bedroom 3	可變冷媒流量冷氣室內機 VRF System Air Conditioning Indoor Unit	東芝 Toshiba	MMK-UP0091HP-E	1	-	-	-	-	-	-	-	-	-	-	-	-	-

備註： 1. 賣方承諾如期數中沒有安裝指明的品牌名稱或產品型號的升降機或設備，便會安裝品質相若的升降機或設備。 2. 所有冷氣機只提供製冷功能。 3. 上表 "-" 代表「不提供」或「不適用」

Notes： 1. The vendor undertakes that if lifts or appliances of the specified brand name or model number are not installed in the Phase, lifts or appliances of comparable quality will be installed.  
2. All Air Conditioning Units provide cooling function only 3. The symbol "-" as shown in the above table denotes "Not provided" or "Not applicable"

6. 設備說明表 Appliances Schedule

位置 Location	設備 Appliance	品牌 Brand	型號 Model No.	第1座 Tower 1													
				3樓 3/F													
				A	B	C	D	E	F	G	H	J	K	L	M	N	P
開放式廚房 Open Kitchen	嵌入式洗衣乾衣機 Built-in Washer Dryer	西門子 Siemens	WK14S251HK	1	1	1	1	1	1	1	1	1	1	1	1	1	1
	嵌入式雪櫃 Built-in Fridge	Philco	PBF7320NF	-	-	-	-	-	-	-	-	1	-	-	-	-	-
	氣體煮食爐 Gas Hob	Mia Cucina	MYB32CT	1	1	1	1	1	1	1	1	1	1	1	1	1	1
	氣體煮食爐 Gas Hob	Mia Cucina	MYB31CT	1	-	-	-	-	-	-	-	1	-	-	-	-	-
	抽油煙機 Cooker Hood	Mia Cucina	MY60	-	1	1	1	1	1	1	1	-	1	1	1	1	1
	抽油煙機 Cooker Hood	Mia Cucina	MY90	1	-	-	-	-	-	-	-	1	-	-	-	-	-
浴室 Bathroom	浴室寶 Thermo Ventilator	樂聲 Panasonic	FV-30BG3H	1	1	1	1	1	1	1	1	1	1	1	1	1	1
主人浴室 Master Bathroom	浴室寶 Thermo Ventilator	樂聲 Panasonic	FV-30BG3H	-	-	-	-	-	-	-	-	1	-	-	-	-	-
平台 / 私人天台 Flat Roof/ Private roof	多聯形分體冷氣室外機 Multi Split Type Air Conditioning Outdoor Unit	東芝 Toshiba	RAS-4M26S3ACV	-	-	-	-	-	1	1	-	-	1	1	1	1	-
	多聯形分體冷氣室外機 Multi Split Type Air Conditioning Outdoor Unit	東芝 Toshiba	RAS-5M38S3ACV	-	1	1	1	1	-	-	1	-	-	-	-	-	1
	可變冷媒流量冷氣室外機 VRF System Air Conditioning Outdoor Unit	東芝 Toshiba	MCY-MAP0501TP	1	-	-	-	-	-	-	-	-	-	-	-	-	-

備註： 1. 賣方承諾如期數中沒有安裝指明的品牌名稱或產品型號的升降機或設備，便會安裝品質相若的升降機或設備。 2. 所有冷氣機只提供製冷功能。 3. 上表 "-" 代表「不提供」或「不適用」

Notes: 1. The vendor undertakes that if lifts or appliances of the specified brand name or model number are not installed in the Phase, lifts or appliances of comparable quality will be installed.  
2. All Air Conditioning Units provide cooling function only 3. The symbol " - " as shown in the above table denotes "Not provided" or "Not applicable"

6. 設備說明表 Appliances Schedule

位置 Location	設備 Appliance	品牌 Brand	型號 Model No.	第1座 Tower 1													
				3樓 3/F													
				A	B	C	D	E	F	G	H	J	K	L	M	N	P
平台 / 私人天台 Flat Roof / Private Roof	可變冷媒流量冷氣室外機 VRF System Air Conditioning Outdoor Unit	東芝 Toshiba	MCY-MAP0601TP	-	-	-	-	-	-	-	-	1	-	-	-	-	-
	煤氣熱水爐 Gas Water Heater	TGC	RBOX16R/L	-	1	1	1	1	1	1	1	-	1	1	1	1	1
			RBOX16QR/L	1	-	-	-	-	-	-	-	2	-	-	-	-	-

備註： 1. 賣方承諾如期數中沒有安裝指明的品牌名稱或產品型號的升降機或設備，便會安裝品質相若的升降機或設備。 2. 所有冷氣機只提供製冷功能。 3. 上表 "-" 代表「不提供」或「不適用」

Notes: 1. The vendor undertakes that if lifts or appliances of the specified brand name or model number are not installed in the Phase, lifts or appliances of comparable quality will be installed.  
2. All Air Conditioning Units provide cooling function only 3. The symbol "-" as shown in the above table denotes "Not provided" or "Not applicable"

6. 設備說明表 Appliances Schedule

位置 Location	設備 Appliance	品牌 Brand	型號 Model No.	第1座 Tower 1																									
				5樓至12樓、15樓至23樓及25樓至32樓 5/F to 12/F, 15/F to 23/F and 25/F to 32/F														33樓 33/F											
				A	B	C	D	E	F	G	H	J	K	L	M	N	P	Q	A	B	C	D	E	F	G	H	J	K	L
客廳 / 飯廳 Living Room / Dining Room	多聯形分體冷氣室內機 Multi Split Type Air Conditioning Indoor Unit	東芝 Toshiba	RAS-M13N4KCV	-	-	-	-	-	1	1	-	-	1	1	1	1	1	-	-	-	-	1	1	-	-	1	1	1	1
	多聯形分體冷氣室內機 Multi Split Type Air Conditioning Indoor Unit	東芝 Toshiba	RAS-M22N4KCV	-	1	1	1	1	-	-	1	1	-	-	-	-	1	-	1	1	1	-	-	1	1	-	-	-	-
	可變冷媒流量冷氣室內機 VRF System Air Conditioning Indoor Unit	東芝 Toshiba	MMK-UP0181HP-E	1	-	-	-	-	-	-	-	-	-	-	-	-	-	-	-	-	-	-	-	-	-	-	-	-	
	可變冷媒流量冷氣室內機 VRF System Air Conditioning Indoor Unit	東芝 Toshiba	MMK-UP0121HP-E	-	-	-	-	-	-	-	-	-	-	-	-	-	-	2	-	-	-	-	-	-	-	-	-	-	
	嵌入式雪櫃 Built-in Fridge	Philco	PBTR122	-	-	-	-	-	1	1	-	1	1	1	1	1	1	-	-	-	-	1	1	-	1	1	1	1	
	嵌入式雪櫃 Built-in Fridge	Philco	PBF7320NF	1	1	1	1	1	-	-	1	-	-	-	-	-	1	-	1	1	1	-	-	1	-	-	-	-	
	嵌入式蒸焗爐 Built-in Steam Oven	西門子 Siemens	CS589ABS0H	1	1	1	1	1	1	1	1	1	1	1	1	1	1	-	1	1	1	1	1	1	1	1	1	1	
嵌入式洗碗碟機 Built-in Dish Washer	西門子 Siemens	SN67ZX86DM	1	-	-	-	-	-	-	-	-	-	-	-	-	-	-	-	-	-	-	-	-	-	-	-	-		
主人睡房 Master Bedroom	可變冷媒流量冷氣室內機 VRF System Air Conditioning Indoor Unit	東芝 Toshiba	MMK-UP0121HP-E	-	-	-	-	-	-	-	-	-	-	-	-	-	-	1	-	-	-	-	-	-	-	-	-	-	

備註： 1. 賣方承諾如期數中沒有安裝指明的品牌名稱或產品型號的升降機或設備，便會安裝品質相若的升降機或設備。 2. 所有冷氣機只提供製冷功能。 3. 上表 "-" 代表「不提供」或「不適用」

Notes: 1. The vendor undertakes that if lifts or appliances of the specified brand name or model number are not installed in the Phase, lifts or appliances of comparable quality will be installed.  
2. All Air Conditioning Units provide cooling function only 3. The symbol "-" as shown in the above table denotes "Not provided" or "Not applicable"

6. 設備說明表 Appliances Schedule

位置 Location	設備 Appliance	品牌 Brand	型號 Model No.	第1座 Tower 1																									
				5樓至12樓、15樓至23樓及25樓至32樓 5/F to 12/F, 15/F to 23/F and 25/F to 32/F																33樓 33/F									
				A	B	C	D	E	F	G	H	J	K	L	M	N	P	Q	A	B	C	D	E	F	G	H	J	K	L
睡房 1 Bedroom 1	多聯形分體冷氣室內機 Multi Split Type Air Conditioning Indoor Unit	東芝 Toshiba	RAS-M10N4KCV	-	1	1	1	1	1	1	1	1	1	1	1	1	1	-	1	1	1	1	1	1	1	1	1	1	1
	可變冷媒流量冷氣室內機 VRF System Air Conditioning Indoor Unit	東芝 Toshiba	MMK-UP0091HP-E	1	-	-	-	-	-	-	-	-	-	-	-	-	-	1	-	-	-	-	-	-	-	-	-	-	-
睡房 2 Bedroom 2	多聯形分體冷氣室內機 Multi Split Type Air Conditioning Indoor Unit	東芝 Toshiba	RAS-M10N4KCV	-	1	1	1	1	-	-	1	1	-	-	-	-	1	-	1	1	1	-	-	1	1	-	-	-	-
	可變冷媒流量冷氣室內機 VRF System Air Conditioning Indoor Unit	東芝 Toshiba	MMK-UP0091HP-E	1	-	-	-	-	-	-	-	-	-	-	-	-	-	1	-	-	-	-	-	-	-	-	-	-	-
睡房 3 Bedroom 3	可變冷媒流量冷氣室內機 VRF System Air Conditioning Indoor Unit	東芝 Toshiba	MMK-UP0091HP-E	1	-	-	-	-	-	-	-	-	-	-	-	-	-	1	-	-	-	-	-	-	-	-	-	-	-
廚房 Kitchen	煤氣熱水爐 Gas Water Heater	TGC	TRJW222TFQL	-	-	-	-	-	-	-	-	-	-	-	-	-	-	1	-	-	-	-	-	-	-	-	-	-	-
	抽氣扇 Exhaust Fan	Ostberg	LPK 125 A1	-	-	-	-	-	-	-	-	-	-	-	-	-	-	1	-	-	-	-	-	-	-	-	-	-	-
	抽油煙機 Cooker Hood	V-ZUG	DFPQSL 9	-	-	-	-	-	-	-	-	-	-	-	-	-	-	1	-	-	-	-	-	-	-	-	-	-	-
	氣體煮食爐 Gas Hob	Bosch	PRA3A6B70X	-	-	-	-	-	-	-	-	-	-	-	-	-	-	1	-	-	-	-	-	-	-	-	-	-	-
	氣體煮食爐 Gas Hob	Bosch	PRB3A6B70X	-	-	-	-	-	-	-	-	-	-	-	-	-	-	1	-	-	-	-	-	-	-	-	-	-	-
	電磁爐 Induction Hob	Bosch	PXX375FB1E	-	-	-	-	-	-	-	-	-	-	-	-	-	-	1	-	-	-	-	-	-	-	-	-	-	-
	嵌入式雪櫃 Built-in Fridge	西門子 Siemens	KI86NHFD0K	-	-	-	-	-	-	-	-	-	-	-	-	-	-	1	-	-	-	-	-	-	-	-	-	-	-
	嵌入式洗衣乾衣機 Built-in Washer Dryer	西門子 Siemens	WK14S251HK	-	-	-	-	-	-	-	-	-	-	-	-	-	-	1	-	-	-	-	-	-	-	-	-	-	-

備註： 1. 賣方承諾如期數中沒有安裝指明的品牌名稱或產品型號的升降機或設備，便會安裝品質相若的升降機或設備。 2. 所有冷氣機只提供製冷功能。 3. 上表 "-" 代表「不提供」或「不適用」

Notes: 1. The vendor undertakes that if lifts or appliances of the specified brand name or model number are not installed in the Phase, lifts or appliances of comparable quality will be installed.

2. All Air Conditioning Units provide cooling function only 3. The symbol "-" as shown in the above table denotes "Not provided" or "Not applicable"

6. 設備說明表 Appliances Schedule

位置 Location	設備 Appliance	品牌 Brand	型號 Model No.	第1座 Tower 1																									
				5樓至12樓、15樓至23樓及25樓至32樓 5/F to 12/F, 15/F to 23/F and 25/F to 32/F																33樓 33/F									
				A	B	C	D	E	F	G	H	J	K	L	M	N	P	Q	A	B	C	D	E	F	G	H	J	K	L
廚房 Kitchen	酒櫃 Wine Cellar	法國名望 Vinvautz	VZ20SSUG	-	-	-	-	-	-	-	-	-	-	-	-	-	-	1	-	-	-	-	-	-	-	-	-	-	-
	嵌入式洗碗碟機 Built-in Dish Washer	西門子 Siemens	SN67ZX86DM	-	-	-	-	-	-	-	-	-	-	-	-	-	-	1	-	-	-	-	-	-	-	-	-	-	-
	嵌入式蒸焗爐 Built-in Steam Oven	Miele	DGC 7250	-	-	-	-	-	-	-	-	-	-	-	-	-	-	1	-	-	-	-	-	-	-	-	-	-	-
開放式廚房 Open Kitchen	嵌入式洗衣乾衣機 Built-in Washer Dryer	西門子 Siemens	WK14S251HK	1	1	1	1	1	1	1	1	1	1	1	1	1	1	-	1	1	1	1	1	1	1	1	1	1	1
	氣體煮食爐 Gas Hob	Mia Cucina	MYB32CT	1	1	1	1	1	1	1	1	1	1	1	1	1	1	-	1	1	1	1	1	1	1	1	1	1	1
	氣體煮食爐 Gas Hob	Mia Cucina	MYB31CT	1	-	-	-	-	-	-	-	-	-	-	-	-	-	-	-	-	-	-	-	-	-	-	-	-	-
	抽油煙機 Cooker Hood	Mia Cucina	MY60	-	1	1	1	1	1	1	1	1	1	1	1	1	1	-	1	1	1	1	1	1	1	1	1	1	1
	抽油煙機 Cooker Hood	Mia Cucina	MY90	1	-	-	-	-	-	-	-	-	-	-	-	-	-	-	-	-	-	-	-	-	-	-	-	-	-
浴室 Bathroom	浴室寶 Thermo Ventilator	樂聲 Panasonic	FV-30BG3H	1	1	1	1	1	1	1	1	1	1	1	1	1	1	-	1	1	1	1	1	1	1	1	1	1	1
主人浴室 Master Bathroom	浴室寶 Thermo Ventilator	樂聲 Panasonic	FV-30BG3H	-	-	-	-	-	-	-	-	-	-	-	-	-	-	1	-	-	-	-	-	-	-	-	-	-	-
浴室 1 Bathroom 1	浴室寶 Thermo Ventilator	樂聲 Panasonic	FV-30BG3H	-	-	-	-	-	-	-	-	-	-	-	-	-	-	1	-	-	-	-	-	-	-	-	-	-	-
浴室 2 Bathroom 2	浴室寶 Thermo Ventilator	樂聲 Panasonic	FV-30BG3H	-	-	-	-	-	-	-	-	-	-	-	-	-	-	1	-	-	-	-	-	-	-	-	-	-	-
	煤氣熱水爐 Gas Water Heater	TGC	TRJW222TFQL	-	-	-	-	-	-	-	-	-	-	-	-	-	-	1	-	-	-	-	-	-	-	-	-	-	-

備註： 1. 賣方承諾如期數中沒有安裝指明的品牌名稱或產品型號的升降機或設備，便會安裝品質相若的升降機或設備。 2. 所有冷氣機只提供製冷功能。 3. 上表 "-" 代表「不提供」或「不適用」

Notes： 1. The vendor undertakes that if lifts or appliances of the specified brand name or model number are not installed in the Phase, lifts or appliances of comparable quality will be installed.

2. All Air Conditioning Units provide cooling function only 3. The symbol "-" as shown in the above table denotes "Not provided" or "Not applicable"



6. 設備說明表 Appliances Schedule

位置 Location	設備 Appliance	品牌 Brand	型號 Model No.	第1座 Tower 1																									
				5樓至12樓、15樓至23樓及25樓至32樓 5/F to 12/F, 15/F to 23/F and 25/F to 32/F																33樓 33/F									
				A	B	C	D	E	F	G	H	J	K	L	M	N	P	Q	A	B	C	D	E	F	G	H	J	K	L
浴室 3 Bathroom 3	抽氣扇 Exhaust Fan	Ostberg	LPK 125 A1	-	-	-	-	-	-	-	-	-	-	-	-	-	-	-	1	-	-	-	-	-	-	-	-	-	-
儲物室 Store	可變冷媒流量冷氣室內機 VRF System Air Conditioning Indoor Unit	東芝 Toshiba	MMK-UP0091HP-E	-	-	-	-	-	-	-	-	-	-	-	-	-	-	-	1	-	-	-	-	-	-	-	-	-	-
露台/ 工作平台/ 空調機平台 Balcony / Utility Platform / AC Platform	多聯形分體冷氣室外機 Multi Split Type Air Conditioning Outdoor Unit	東芝 Toshiba	RAS-4M26S3ACV	-	-	-	-	-	1	1	-	-	1	1	1	1	1	-	-	-	-	1	1	-	-	1	1	1	1
	多聯形分體冷氣室外機 Multi Split Type Air Conditioning Outdoor Unit	東芝 Toshiba	RAS-5M38S3ACV	-	1	1	1	1	-	-	1	1	-	-	-	-	1	-	1	1	1	-	-	1	1	-	-	-	-
	可變冷媒流量冷氣室外機 VRF System Air Conditioning Outdoor Unit	東芝 Toshiba	MCY-MAP0501TP	1	-	-	-	-	-	-	-	-	-	-	-	-	-	-	-	-	-	-	-	-	-	-	-	-	-
	煤氣熱水爐 Gas Water Heater	TGC	RBOX16R/L	-	1	1	1	1	1	1	1	1	1	1	1	1	1	-	1	1	1	1	1	1	1	1	1	1	1
			RBOX16QR/L	1	-	-	-	-	-	-	-	-	-	-	-	-	-	-	-	-	-	-	-	-	-	-	-	-	-
平台 / 私人天台 Flat Roof / Private Roof	可變冷媒流量冷氣室外機 VRF System Air Conditioning Outdoor Unit	東芝 Toshiba	MCY-MAP0401TP	-	-	-	-	-	-	-	-	-	-	-	-	-	-	1	-	-	-	-	-	-	-	-	-	-	-
	可變冷媒流量冷氣室外機 VRF System Air Conditioning Outdoor Unit	東芝 Toshiba	MCY-MAP0501TP	-	-	-	-	-	-	-	-	-	-	-	-	-	-	1	-	-	-	-	-	-	-	-	-	-	-

備註： 1. 賣方承諾如期數中沒有安裝指明的品牌名稱或產品型號的升降機或設備，便會安裝品質相若的升降機或設備。 2. 所有冷氣機只提供製冷功能。 3. 上表 "-" 代表「不提供」或「不適用」

Notes： 1. The vendor undertakes that if lifts or appliances of the specified brand name or model number are not installed in the Phase, lifts or appliances of comparable quality will be installed.  
2. All Air Conditioning Units provide cooling function only 3. The symbol "-" as shown in the above table denotes "Not provided" or "Not applicable"

7. 住宅單位機電裝置位置及數量說明表 Schedule for the Location and Number of Mechanical and Electrical Provisions of Residential Units

位置 Location	描述 Description		第1座 Tower 1													
			3樓 3/F													
			A	B	C	D	E	F	G	H	J	K	L	M	N	P
大門入口 Main Entrance	門鈴按鈕 Door bell push button		1	1	1	1	1	1	1	1	1	1	1	1	1	1
客廳 / 飯廳 Living Room / Dining Room	總電掣箱 Miniature circuit breaker board		-	1	1	1	1	-	-	1	1	-	-	-	-	1
	雙位燈掣 2-gang lighting switch		3	3	3	3	3	3	3	3	4	3	3	3	3	3
	單位燈掣 1-gang lighting switch		1	1	1	1	1	1	1	2	1	1	1	1	1	1
	燈位 Lighting point		4	2	2	2	2	2	2	2	4	2	2	2	2	2
	電話插座 Telephone outlet		1	1	1	1	1	1	1	1	1	1	1	1	1	1
	互聯網接駁位 Data outlet	一般用途 For general use	1	1	1	1	1	1	1	1	1	1	1	1	1	1
	電視/電台天線插座 TV/FM outlet		1	1	1	1	1	1	1	1	1	1	1	1	1	1
	雙極開關掣 Double pole switch	適用於蒸焗爐 For steam oven	1	1	1	1	1	1	1	1	1	1	1	1	1	1
	雙位雙極開關掣 2-gang double pole switch	適用於浴室寶及煤氣熱水爐 For thermo ventilator and gas water heater	1	1	1	1	1	1	1	1	1	1	1	1	1	1
	13A 雙位插座連開關掣 13A twin socket outlet with switch	一般用途 For general use	2	3	3	3	3	2	2	3	2	2	2	2	2	2
	13A 單位插座連開關掣 13A single socket outlet with switch	適用於雪櫃及 / 或洗碗碟機及 / 或 一般用途 For fridge and / or dish washer and / or general use	4	1	1	1	1	1	1	2	4	1	1	1	1	1
	門鈴 Door bell		1	1	1	1	1	1	1	1	1	1	1	1	1	1
	對講機 Door phone		1	1	1	1	1	1	1	1	1	1	1	1	1	1
	冷氣室內機接駁點 Connection point for air conditioning indoor unit		1	1	1	1	1	1	1	1	1	1	1	1	1	1
	來及去水位 Water and Drain points	適用於洗碗碟機 For dish washer	1	-	-	-	-	-	-	-	1	-	-	-	-	-

備註：上表 "-" 代表「不提供」或「不適用」  
Note: The symbol "-" as shown in the above table denotes "Not provided" or "Not applicable"

7. 住宅單位機電裝置位置及數量說明表 Schedule for the Location and Number of Mechanical and Electrical Provisions of Residential Units

位置 Location	描述 Description		第1座 Tower 1													
			3樓 3/F													
			A	B	C	D	E	F	G	H	J	K	L	M	N	P
開放式廚房 Open Kitchen	總電掣箱 Miniature circuit breaker board		1	-	-	-	-	1	1	-	-	1	1	1	1	-
	燈位 Lighting point		1	1	1	1	1	1	1	1	2	1	1	1	1	1
	13A 雙位插座連開關掣 13A twin socket outlet with switch	一般用途 For general use	1	-	-	-	-	1	1	-	1	1	1	1	1	1
	13A 單位插座連開關掣 13A single socket outlet with switch	適用於雪櫃及 / 或抽油煙機及 / 或煮食爐 / 或洗衣機 / 或一般用途 For fridge and / or cooker hood and / or gas hob and / or washer dryer and / or general use	4	3	3	3	3	3	3	3	5	3	3	3	3	3
	來及去水位 Water and drain points	適用於鋅盆 For sink	1	1	1	1	1	1	1	1	1	1	1	1	1	1
		適用於洗衣乾衣機 For washer dryer	1	1	1	1	1	1	1	1	1	1	1	1	1	1

備註：上表 "-" 代表「不提供」或「不適用」  
Note: The symbol "-" as shown in the above table denotes "Not provided" or "Not applicable"

7. 住宅單位機電裝置位置及數量說明表 Schedule for the Location and Number of Mechanical and Electrical Provisions of Residential Units

位置 Location	描述 Description		第1座 Tower 1													
			3樓 3/F													
			A	B	C	D	E	F	G	H	J	K	L	M	N	P
睡房 1 Bedroom 1	單位燈掣 1-gang lighting switch		1	1	1	1	1	1	1	1	1	1	1	1	1	1
	燈位 Lighting point		1	1	1	1	1	1	1	1	1	1	1	1	1	1
	電話插座 Telephone outlet		1	1	1	1	1	1	1	1	1	1	1	1	1	1
	電視/電台天線插座 TV/FM outlet		1	1	1	1	1	1	1	1	1	1	1	1	1	1
	13A 單位插座連開關掣 (附有USB插頭) 13A single socket outlet with switch (with USB port)	一般用途 For general use	1	1	1	1	1	1	1	1	1	1	1	1	1	1
	13A 單位插座連開關掣 13A single socket outlet with switch	一般用途 For general use	1	1	1	1	1	1	1	1	1	1	1	1	1	1
	冷氣室內機接駁點 Connection point for air conditioning indoor unit		1	1	1	1	1	1	1	1	1	1	1	1	1	1
睡房 2 Bedroom 2	單位燈掣 1-gang lighting switch		1	1	1	1	1	-	-	1	1	-	-	-	-	1
	燈位 Lighting point		1	1	1	1	1	-	-	1	1	-	-	-	-	1
	13A 單位插座連開關掣 (附有USB插頭) 13A single socket outlet with switch (with USB port)	一般用途 For general use	1	1	1	1	1	-	-	1	1	-	-	-	-	1
	13A 單位插座連開關掣 13A single socket outlet with switch	一般用途 For general use	1	1	1	1	1	-	-	1	1	-	-	-	-	1
	冷氣室內機接駁點 Connection point for air conditioning indoor unit		1	1	1	1	1	-	-	1	1	-	-	-	-	1

備註：上表 "-" 代表「不提供」或「不適用」  
Note: The symbol "-" as shown in the above table denotes "Not provided" or "Not applicable"

7. 住宅單位機電裝置位置及數量說明表 Schedule for the Location and Number of Mechanical and Electrical Provisions of Residential Units

位置 Location	描述 Description		第1座 Tower 1													
			3樓 3/F													
			A	B	C	D	E	F	G	H	J	K	L	M	N	P
睡房 3 Bedroom 3	單位燈掣 1-gang lighting switch		1	-	-	-	-	-	-	-	-	-	-	-	-	-
	燈位 Lighting point		1	-	-	-	-	-	-	-	-	-	-	-	-	-
	13A單位插座連開關掣(附有USB插頭) 13A single socket outlet with switch (with USB port)	一般用途 For general use	1	-	-	-	-	-	-	-	-	-	-	-	-	-
	13A單位插座連開關掣 13A single socket outlet with switch	一般用途 For general use	1	-	-	-	-	-	-	-	-	-	-	-	-	-
	冷氣室內機接駁點 Connection point for air conditioning indoor unit		1	-	-	-	-	-	-	-	-	-	-	-	-	-
主人睡房 Master Bedroom	單位燈掣 1-gang lighting switch		-	-	-	-	-	-	-	-	1	-	-	-	-	-
	雙位燈掣 2-gang lighting switch		-	-	-	-	-	-	-	-	1	-	-	-	-	-
	燈位 Lighting point		-	-	-	-	-	-	-	-	1	-	-	-	-	-
	電話插座 Telephone outlet		-	-	-	-	-	-	-	-	1	-	-	-	-	-
	電視/電台天線插座 TV/FM outlet		-	-	-	-	-	-	-	-	1	-	-	-	-	-
	雙位雙極開關掣 2-gang double pole switch	適用於浴室寶及煤氣熱水爐 For thermo ventilator and gas water heater	-	-	-	-	-	-	-	-	1	-	-	-	-	-
	13A 單位插座連開關掣(附有USB插頭) 13A single socket outlet with switch (with USB port)	一般用途 For general use	-	-	-	-	-	-	-	-	1	-	-	-	-	-
	13A 單位插座連開關掣 13A single socket outlet with switch	一般用途 For general use	-	-	-	-	-	-	-	-	1	-	-	-	-	-
	冷氣室內機接駁點 Connection point for air conditioning indoor unit		-	-	-	-	-	-	-	-	1	-	-	-	-	-

備註：上表 "-" 代表「不提供」或「不適用」  
Note: The symbol "-" as shown in the above table denotes "Not provided" or "Not applicable"

7. 住宅單位機電裝置位置及數量說明表 Schedule for the Location and Number of Mechanical and Electrical Provisions of Residential Units

位置 Location	描述 Description		第1座 Tower 1													
			3樓 3/F													
			A	B	C	D	E	F	G	H	J	K	L	M	N	P
浴室 Bathroom	燈位 Lighting point		2	2	2	2	2	2	2	2	2	2	2	2	2	2
	13A單位插座(附有USB插頭) 13A single socket outlet (with USB port)	一般用途 For general use	1	1	1	1	1	1	1	1	1	1	1	1	1	1
	煤氣熱水爐遙控開關 Remote control for gas water heater		1	1	1	1	1	1	1	1	1	1	1	1	1	1
	來及去水位 Water and drain points	適用於座廁 For water closet	1	1	1	1	1	1	1	1	1	1	1	1	1	1
		適用於面盆 For basin	1	1	1	1	1	1	1	1	1	1	1	1	1	1
		適用於企缸 For shower	1	1	1	1	1	1	1	1	1	1	1	1	1	1
	去水位 Drain points	適用於地台去水 For floor drain	1	1	1	1	1	1	1	1	1	1	1	1	1	1
主人浴室 Master Bathroom	燈位 Lighting point		-	-	-	-	-	-	-	-	2	-	-	-	-	-
	13A單位插座(附有USB插頭) 13A single socket outlet (with USB port)	一般用途 For general use	-	-	-	-	-	-	-	-	1	-	-	-	-	-
	煤氣熱水爐遙控開關 Remote control for gas water heater		-	-	-	-	-	-	-	-	1	-	-	-	-	-
	來及去水位 Water and drain points	適用於座廁 For water closet	-	-	-	-	-	-	-	-	1	-	-	-	-	-
		適用於面盆 For basin	-	-	-	-	-	-	-	-	1	-	-	-	-	-
		適用於企缸 For shower	-	-	-	-	-	-	-	-	1	-	-	-	-	-
	去水位 Drain points	適用於地台去水 For floor drain	-	-	-	-	-	-	-	-	1	-	-	-	-	-

備註：上表 "-" 代表「不提供」或「不適用」  
Note: The symbol "-" as shown in the above table denotes "Not provided" or "Not applicable"

7. 住宅單位機電裝置位置及數量說明表 Schedule for the Location and Number of Mechanical and Electrical Provisions of Residential Units

位置 Location	描述 Description		第1座 Tower 1													
			3樓 3/F													
			A	B	C	D	E	F	G	H	J	K	L	M	N	P
平台 / 私人天台 Flat Roof / Private Roof	燈位 Lighting point		3	3	3	3	3	2	2	6	8	3	3	3	3	4
	13A 防水單位插座 13A weatherproof single socket outlet	一般用途 For general use	1	1	1	1	1	1	1	2	2	1	1	1	1	1
	防水雙極開關掣 Weatherproof double pole isolator	適用於冷氣室外機 For air conditioning outdoor unit	1	1	1	1	1	1	1	1	1	1	1	1	1	1
	來及去水位 Water and drain points	適用於鋅盆 For sink	1	1	1	1	1	1	1	1	1	1	1	1	1	1
	去水位 Drain points	適用於雨水去水 For rain water outlet	2	2	2	2	2	2	2	4	3	2	2	2	2	4
		適用於草坪及花槽去水 For lawn and planter drain	-	-	-	-	-	-	-	-	1	-	-	-	-	-

備註：上表 "-" 代表「不提供」或「不適用」  
Note: The symbol "-" as shown in the above table denotes "Not provided" or "Not applicable"



7. 住宅單位機電裝置位置及數量說明表 Schedule for the Location and Number of Mechanical and Electrical Provisions of Residential Units

位置 Location	描述 Description		第1座 Tower 1																											
			5樓至12樓、15樓至23樓 及 25樓至32樓 5/F to 12/F, 15/F to 23/F and 25/F to 32/F																33樓 33/F											
			A	B	C	D	E	F	G	H	J	K	L	M	N	P	Q	A	B	C	D	E	F	G	H	J	K	L	M	
大門入口 Main Entrance	門鈴按鈕 Door bell push button		1	1	1	1	1	1	1	1	1	1	1	1	1	1	1	1	1	1	1	1	1	1	1	1	1	1		
客廳 / 飯廳 Living Room / Dining Room	總電掣箱 Miniature circuit breaker board		-	1	1	1	1	-	-	1	-	-	-	-	-	-	1	-	1	1	1	-	-	1	-	-	-	-		
	雙位燈掣 2-gang lighting switch		3	3	3	3	3	3	3	3	3	3	3	3	3	3	3	5	3	3	3	3	3	3	3	3	3	3		
	單位燈掣 1-gang lighting switch		1	1	1	1	1	1	1	1	1	1	1	1	1	1	1	-	1	1	1	1	1	1	1	1	1	1		
	燈位 Lighting point		4	2	2	2	2	2	2	2	2	2	2	2	2	2	2	3	2	2	2	2	2	2	2	2	2	2		
	電話插座 Telephone outlet		1	1	1	1	1	1	1	1	1	1	1	1	1	1	1	1	1	1	1	1	1	1	1	1	1	1		
	互聯網接駁位 Data outlet	一般用途 For general use	1	1	1	1	1	1	1	1	1	1	1	1	1	1	1	1	1	1	1	1	1	1	1	1	1	1		
	電視/電台天線插座 TV/FM outlet		1	1	1	1	1	1	1	1	1	1	1	1	1	1	1	1	1	1	1	1	1	1	1	1	1	1		
	雙極開關掣 Double pole switch	適用於抽氣扇 / 浴室寶 For exhaust fan / thermo ventilator	-	-	-	-	-	-	-	-	-	-	-	-	-	-	-	2	-	-	-	-	-	-	-	-	-	-		
		適用於蒸焗爐 For steam oven	1	1	1	1	1	1	1	1	1	1	1	1	1	1	1	-	1	1	1	1	1	1	1	1	1	1		
	雙位雙極開關掣 2-gang double pole switch	適用於抽氣扇 / 浴室寶 / 煤氣熱水爐 For exhaust fan / thermo ventilator / gas water heater	1	1	1	1	1	1	1	1	1	1	1	1	1	1	1	1	1	1	1	1	1	1	1	1	1	1		
	13A雙位插座連開關掣 13A twin socket outlet with switch	一般用途 For general use	2	3	3	3	3	2	2	3	2	2	2	2	2	2	2	2	3	3	3	2	2	3	2	2	2	2		
	13A單位插座連開關掣 13A single socket outlet with switch	適用於雪櫃及 / 或洗碗機 / 或一般用途 For fridge and / or dish washer and / or general use	4	1	1	1	1	1	1	2	1	1	1	1	1	1	1	-	1	1	1	1	1	2	1	1	1	1		
	門鈴 Door bell		1	1	1	1	1	1	1	1	1	1	1	1	1	1	1	-	1	1	1	1	1	1	1	1	1	1		
	對講機 Door phone		1	1	1	1	1	1	1	1	1	1	1	1	1	1	1	1	1	1	1	1	1	1	1	1	1	1		
	冷氣室內機接駁點 Connection point for air conditioning indoor unit		1	1	1	1	1	1	1	1	1	1	1	1	1	1	1	2	1	1	1	1	1	1	1	1	1	1		
	來及去水位 Water and Drain Points	適用於洗碗碟機 For dish washer	1	-	-	-	-	-	-	-	-	-	-	-	-	-	-	-	-	-	-	-	-	-	-	-	-	-		

備註：上表 "-" 代表「不提供」或「不適用」  
Note: The symbol "-" as shown in the above table denotes "Not provided" or "Not applicable"

7. 住宅單位機電裝置位置及數量說明表 Schedule for the Location and Number of Mechanical and Electrical Provisions of Residential Units

位置 Location	描述 Description		第1座 Tower 1																											
			5樓至12樓、15樓至23樓 及 25樓至32樓 5/F to 12/F, 15/F to 23/F and 25/F to 32/F															33樓 33/F												
			A	B	C	D	E	F	G	H	J	K	L	M	N	P	Q	A	B	C	D	E	F	G	H	J	K	L	M	
開放式廚房 Open Kitchen	總電掣箱 Miniature circuit breaker board		1	-	-	-	-	1	1	-	1	1	1	1	1	1	-	-	-	-	1	1	-	1	1	1	1	1		
	燈位 Lighting point		1	1	1	1	1	1	1	1	1	1	1	1	1	1	1	-	1	1	1	1	1	1	1	1	1	1		
	13A雙位插座連開關掣 13A twin socket outlet with switch	一般用途 For general use	1	-	-	-	-	1	1	-	1	1	1	1	1	1	1	-	-	-	-	1	1	-	1	1	1	1		
	13A單位插座連開關掣 13A single socket outlet with switch	適用於雪櫃及 / 或抽油煙機及 / 或煮食爐 / 或洗衣機 / 或一般用途 For fridge and / or cooker hood and / or gas hob and / or washer dryer and / or general use	4	3	3	3	3	3	3	3	3	3	3	3	3	3	3	-	3	3	3	3	3	3	3	3	3	3		
	來及去水位 Water and drain points	適用於鋅盆 For sink	1	1	1	1	1	1	1	1	1	1	1	1	1	1	1	-	1	1	1	1	1	1	1	1	1	1		
		適用於洗衣乾衣機 For washer dryer	1	1	1	1	1	1	1	1	1	1	1	1	1	1	1	-	1	1	1	1	1	1	1	1	1	1		
廚房 Kitchen	燈位 Lighting point		-	-	-	-	-	-	-	-	-	-	-	-	-	-	3	-	-	-	-	-	-	-	-	-	-	-		
	雙極開關掣 Double pole switch	適用於蒸焗爐 / 電磁煮食爐 For steam oven / induction hob	-	-	-	-	-	-	-	-	-	-	-	-	-	-	2	-	-	-	-	-	-	-	-	-	-			
	13A雙位插座連開關掣 13A twin socket outlet with switch	一般用途 For general use	-	-	-	-	-	-	-	-	-	-	-	-	-	-	2	-	-	-	-	-	-	-	-	-	-			

備註：上表 "-" 代表「不提供」或「不適用」  
Note: The symbol "-" as shown in the above table denotes "Not provided" or "Not applicable"

7. 住宅單位機電裝置位置及數量說明表 Schedule for the Location and Number of Mechanical and Electrical Provisions of Residential Units

位置 Location	描述 Description		第1座 Tower 1																											
			5樓至12樓、15樓至23樓 及 25樓至32樓 5/F to 12/F, 15/F to 23/F and 25/F to 32/F															33樓 33/F												
			A	B	C	D	E	F	G	H	J	K	L	M	N	P	Q	A	B	C	D	E	F	G	H	J	K	L	M	
廚房 Kitchen	13A單位插座連開關掣 13A single socket outlet with switch	適用於雪櫃及 / 或抽油煙機及 / 或洗衣機及 / 或煮食爐 / 或酒櫃 / 或洗碗碟機 / 或一般用途 For fridge and / or cooker hood and / or washer dryer and / or gas hob and / or wine cellar and /or dish washer and / or general use	-	-	-	-	-	-	-	-	-	-	-	-	-	-	-	7	-	-	-	-	-	-	-	-	-	-	-	
	門鈴 Door bell		-	-	-	-	-	-	-	-	-	-	-	-	-	-	-	1	-	-	-	-	-	-	-	-	-	-	-	
	來及去水位 Water and drain points	適用於鋅盆 For sink	-	-	-	-	-	-	-	-	-	-	-	-	-	-	-	1	-	-	-	-	-	-	-	-	-	-	-	
		適用於洗碗碟機 For dish washer	-	-	-	-	-	-	-	-	-	-	-	-	-	-	-	1	-	-	-	-	-	-	-	-	-	-	-	
		適用於洗衣乾衣機 For washer dryer	-	-	-	-	-	-	-	-	-	-	-	-	-	-	-	1	-	-	-	-	-	-	-	-	-	-	-	
睡房 1 Bedroom 1	單位燈掣 1-gang lighting switch		1	1	1	1	1	1	1	1	1	1	1	1	1	1	1	1	1	1	1	1	1	1	1	1	1	1		
	雙位燈掣 2-gang lighting switch		-	-	-	-	-	-	-	-	-	-	-	-	-	-	-	1	-	-	-	-	-	-	-	-	-	-		
	燈位 Lighting point		1	1	1	1	1	1	1	1	1	1	1	1	1	1	1	1	1	1	1	1	1	1	1	1	1	1		
	電話插座 Telephone outlet		1	1	1	1	1	1	1	1	1	1	1	1	1	1	1	1	1	1	1	1	1	1	1	1	1	1		
	電視/電台天線插座 TV/FM outlet		1	1	1	1	1	1	1	1	1	1	1	1	1	1	1	1	1	1	1	1	1	1	1	1	1	1		
	雙極開關掣 Double pole switch	適用於浴室寶 For thermo ventilator	-	-	-	-	-	-	-	-	-	-	-	-	-	-	-	1	-	-	-	-	-	-	-	-	-	-	-	
	13A單位插座連開關掣(附有USB插頭) 13A single socket outlet with switch (with USB port)	一般用途 For general use	1	1	1	1	1	1	1	1	1	1	1	1	1	1	1	1	1	1	1	1	1	1	1	1	1	1		
	13A單位插座連開關掣 13A single socket outlet with switch	一般用途 For general use	1	1	1	1	1	1	1	1	1	1	1	1	1	1	1	1	1	1	1	1	1	1	1	1	1	1		
	冷氣室內機接駁點 Connection point for air conditioning indoor unit		1	1	1	1	1	1	1	1	1	1	1	1	1	1	1	1	1	1	1	1	1	1	1	1	1	1		

備註：上表 "-" 代表「不提供」或「不適用」  
Note: The symbol "-" as shown in the above table denotes "Not provided" or "Not applicable"

7. 住宅單位機電裝置位置及數量說明表 Schedule for the Location and Number of Mechanical and Electrical Provisions of Residential Units

位置 Location	描述 Description		第1座 Tower 1																									
			5樓至12樓、15樓至23樓 及 25樓至32樓 5/F to 12/F, 15/F to 23/F and 25/F to 32/F															33樓 33/F										
			A	B	C	D	E	F	G	H	J	K	L	M	N	P	Q	A	B	C	D	E	F	G	H	J	K	L
睡房 2 Bedroom 2	單位燈掣 1-gang lighting switch		1	1	1	1	1	-	-	1	1	-	-	-	-	-	1	1	1	1	-	-	1	1	-	-	-	-
	燈位 Lighting point		1	1	1	1	1	-	-	1	1	-	-	-	-	-	1	1	1	1	-	-	1	1	-	-	-	-
	13A單位插座連開關掣(附有USB插頭) 13A single socket outlet with switch (with USB port)	一般用途 For general use	1	1	1	1	1	-	-	1	1	-	-	-	-	-	1	1	1	1	-	-	1	1	-	-	-	-
	13A單位插座連開關掣 13A single socket outlet with switch	一般用途 For general use	1	1	1	1	1	-	-	1	1	-	-	-	-	-	1	1	1	1	-	-	1	1	-	-	-	-
	冷氣室內機接駁點 Connection point for air conditioning indoor unit		1	1	1	1	1	-	-	1	1	-	-	-	-	-	1	1	1	1	-	-	1	1	-	-	-	-
睡房 3 Bedroom 3	單位燈掣 1-gang lighting switch		1	-	-	-	-	-	-	-	-	-	-	-	-	-	-	1	-	-	-	-	-	-	-	-	-	-
	燈位 Lighting point		1	-	-	-	-	-	-	-	-	-	-	-	-	-	-	1	-	-	-	-	-	-	-	-	-	-
	13A單位插座連開關掣(附有USB插頭) 13A single socket outlet with switch (with USB port)	一般用途 For general use	1	-	-	-	-	-	-	-	-	-	-	-	-	-	-	1	-	-	-	-	-	-	-	-	-	-
	13A單位插座連開關掣 13A single socket outlet with switch	一般用途 For general use	1	-	-	-	-	-	-	-	-	-	-	-	-	-	-	1	-	-	-	-	-	-	-	-	-	-
	冷氣室內機接駁點 Connection point for air conditioning indoor unit		1	-	-	-	-	-	-	-	-	-	-	-	-	-	-	1	-	-	-	-	-	-	-	-	-	-
主人睡房 Master Bedroom	單位燈掣 1-gang lighting switch		-	-	-	-	-	-	-	-	-	-	-	-	-	-	-	1	-	-	-	-	-	-	-	-	-	-
	雙位燈掣 2-gang lighting switch		-	-	-	-	-	-	-	-	-	-	-	-	-	-	-	1	-	-	-	-	-	-	-	-	-	-
	燈位 Lighting point		-	-	-	-	-	-	-	-	-	-	-	-	-	-	-	1	-	-	-	-	-	-	-	-	-	-

備註：上表 "-" 代表「不提供」或「不適用」  
Note: The symbol "-" as shown in the above table denotes "Not provided" or "Not applicable"

7. 住宅單位機電裝置位置及數量說明表 Schedule for the Location and Number of Mechanical and Electrical Provisions of Residential Units

位置 Location	描述 Description		第1座 Tower 1																											
			5樓至12樓、15樓至23樓 及 25樓至32樓 5/F to 12/F, 15/F to 23/F and 25/F to 32/F															33樓 33/F												
			A	B	C	D	E	F	G	H	J	K	L	M	N	P	Q	A	B	C	D	E	F	G	H	J	K	L	M	
主人睡房 Master Bedroom	電話插座 Telephone outlet		-	-	-	-	-	-	-	-	-	-	-	-	-	-	-	1	-	-	-	-	-	-	-	-	-	-	-	
	電視/電台天線插座 TV/FM outlet		-	-	-	-	-	-	-	-	-	-	-	-	-	-	-	1	-	-	-	-	-	-	-	-	-	-	-	
	雙極開關掣 Double pole switch	適用於浴室寶 For thermo ventilator	-	-	-	-	-	-	-	-	-	-	-	-	-	-	-	1	-	-	-	-	-	-	-	-	-	-	-	
	13A 單位插座連開關掣(附有USB插頭) 13A single socket outlet with switch (with USB port)	一般用途 For general use	-	-	-	-	-	-	-	-	-	-	-	-	-	-	-	1	-	-	-	-	-	-	-	-	-	-	-	
	13A單位插座連開關掣 13A single socket outlet with switch	一般用途 For general use	-	-	-	-	-	-	-	-	-	-	-	-	-	-	-	1	-	-	-	-	-	-	-	-	-	-	-	
	冷氣室內機接駁點 Connection point for air conditioning indoor unit		-	-	-	-	-	-	-	-	-	-	-	-	-	-	-	1	-	-	-	-	-	-	-	-	-	-	-	-
浴室 Bathroom	燈位 Lighting point		2	2	2	2	2	2	2	2	2	2	2	2	2	2	2	-	2	2	2	2	2	2	2	2	2	2	2	
	13A單位插座(附有USB插頭) 13A single socket outlet (with USB port)	一般用途 For general use	1	1	1	1	1	1	1	1	1	1	1	1	1	1	1	-	1	1	1	1	1	1	1	1	1	1	1	
	煤氣熱水爐遙控開關 Remote control for gas water heater		1	1	1	1	1	1	1	1	1	1	1	1	1	1	1	-	1	1	1	1	1	1	1	1	1	1	1	
	來及去水位 Water and drain points	適用於座廁 For water closet	1	1	1	1	1	1	1	1	1	1	1	1	1	1	1	-	1	1	1	1	1	1	1	1	1	1	1	
		適用於面盆 For basin	1	1	1	1	1	1	1	1	1	1	1	1	1	1	1	-	1	1	1	1	1	1	1	1	1	1	1	
		適用於企缸 For shower	1	1	1	1	1	1	1	1	1	1	1	1	1	1	1	-	1	1	1	1	1	1	1	1	1	1	1	
	去水位 Drain points	適用於地台去水 For floor drain	1	1	1	1	1	1	1	1	1	1	1	1	1	1	1	-	1	1	1	1	1	1	1	1	1	1	1	

備註：上表 "-" 代表「不提供」或「不適用」  
Note: The symbol "-" as shown in the above table denotes "Not provided" or "Not applicable"

7. 住宅單位機電裝置位置及數量說明表 Schedule for the Location and Number of Mechanical and Electrical Provisions of Residential Units

位置 Location	描述 Description		第1座 Tower 1																									
			5樓至12樓、15樓至23樓 及 25樓至32樓 5/F to 12/F, 15/F to 23/F and 25/F to 32/F															33樓 33/F										
			A	B	C	D	E	F	G	H	J	K	L	M	N	P	Q	A	B	C	D	E	F	G	H	J	K	L
浴室 1 Bathroom 1	燈位 Lighting point		-	-	-	-	-	-	-	-	-	-	-	-	-	-	2	-	-	-	-	-	-	-	-	-	-	-
	13A單位插座(附有USB插頭) 13A single socket outlet (with USB port)	一般用途 For general use	-	-	-	-	-	-	-	-	-	-	-	-	-	-	1	-	-	-	-	-	-	-	-	-	-	-
	煤氣熱水爐遙控開關 Remote control for gas water heater		-	-	-	-	-	-	-	-	-	-	-	-	-	-	1	-	-	-	-	-	-	-	-	-	-	-
	來及去水位 Water and drain points	適用於座廁 For water closet	-	-	-	-	-	-	-	-	-	-	-	-	-	-	1	-	-	-	-	-	-	-	-	-	-	-
		適用於面盆 For basin	-	-	-	-	-	-	-	-	-	-	-	-	-	-	1	-	-	-	-	-	-	-	-	-	-	-
		適用於企缸 For shower	-	-	-	-	-	-	-	-	-	-	-	-	-	-	1	-	-	-	-	-	-	-	-	-	-	-
去水位 Drain points	適用於地台去水 For floor drain	-	-	-	-	-	-	-	-	-	-	-	-	-	-	1	-	-	-	-	-	-	-	-	-	-	-	
浴室 2 Bathroom 2	燈位 Lighting point		-	-	-	-	-	-	-	-	-	-	-	-	-	-	2	-	-	-	-	-	-	-	-	-	-	-
	13A單位插座(附有USB插頭) 13A single socket outlet (with USB port)	一般用途 For general use	-	-	-	-	-	-	-	-	-	-	-	-	-	-	1	-	-	-	-	-	-	-	-	-	-	-
	煤氣熱水爐遙控開關 Remote control for gas water heater		-	-	-	-	-	-	-	-	-	-	-	-	-	-	1	-	-	-	-	-	-	-	-	-	-	-
	來及去水位 Water and Drain Points	適用於座廁 For Water Closet	-	-	-	-	-	-	-	-	-	-	-	-	-	-	1	-	-	-	-	-	-	-	-	-	-	-
		適用於面盆 For Basin	-	-	-	-	-	-	-	-	-	-	-	-	-	-	1	-	-	-	-	-	-	-	-	-	-	-
		適用於企缸 For Shower	-	-	-	-	-	-	-	-	-	-	-	-	-	-	1	-	-	-	-	-	-	-	-	-	-	-
去水位 Drain Points	適用於地台去水 For Floor Drain	-	-	-	-	-	-	-	-	-	-	-	-	-	-	1	-	-	-	-	-	-	-	-	-	-	-	

備註：上表 "-" 代表「不提供」或「不適用」  
Note: The symbol "-" as shown in the above table denotes "Not provided" or "Not applicable"

7. 住宅單位機電裝置位置及數量說明表 Schedule for the Location and Number of Mechanical and Electrical Provisions of Residential Units

位置 Location	描述 Description		第1座 Tower 1																											
			5樓至12樓、15樓至23樓 及 25樓至32樓 5/F to 12/F, 15/F to 23/F and 25/F to 32/F															33樓 33/F												
			A	B	C	D	E	F	G	H	J	K	L	M	N	P	Q	A	B	C	D	E	F	G	H	J	K	L	M	
浴室 3 Bathroom 3	燈位 Lighting point		-	-	-	-	-	-	-	-	-	-	-	-	-	-	-	1	-	-	-	-	-	-	-	-	-	-	-	
	來及去水位 Water and drain points	適用於座廁 For water closet	-	-	-	-	-	-	-	-	-	-	-	-	-	-	-	1	-	-	-	-	-	-	-	-	-	-	-	
		適用於面盆 For basin	-	-	-	-	-	-	-	-	-	-	-	-	-	-	-	-	1	-	-	-	-	-	-	-	-	-	-	
	去水位 Drain points	適用於地台去水 For floor drain	-	-	-	-	-	-	-	-	-	-	-	-	-	-	-	-	1	-	-	-	-	-	-	-	-	-	-	
主人浴室 Master Bathroom	燈位 Lighting point		-	-	-	-	-	-	-	-	-	-	-	-	-	-	-	2	-	-	-	-	-	-	-	-	-	-	-	
	13A單位插座(附有USB插頭) 13A single socket outlet (with USB port)	一般用途 For general use	-	-	-	-	-	-	-	-	-	-	-	-	-	-	-	1	-	-	-	-	-	-	-	-	-	-	-	
	煤氣熱水爐遙控開關 Remote control for gas water heater		-	-	-	-	-	-	-	-	-	-	-	-	-	-	-	1	-	-	-	-	-	-	-	-	-	-	-	
	來及去水位 Water and drain points	適用於座廁 For water closet	-	-	-	-	-	-	-	-	-	-	-	-	-	-	-	-	1	-	-	-	-	-	-	-	-	-	-	
		適用於面盆 For basin	-	-	-	-	-	-	-	-	-	-	-	-	-	-	-	-	1	-	-	-	-	-	-	-	-	-	-	
		適用於浴缸 For bath tub	-	-	-	-	-	-	-	-	-	-	-	-	-	-	-	-	1	-	-	-	-	-	-	-	-	-	-	
	去水位 Drain Points	適用於地台去水 For floor drain	-	-	-	-	-	-	-	-	-	-	-	-	-	-	-	1	-	-	-	-	-	-	-	-	-	-		
儲物室 Store	總電掣箱 Miniature circuit breaker board		-	-	-	-	-	-	-	-	-	-	-	-	-	-	-	1	-	-	-	-	-	-	-	-	-	-		
	雙位燈掣 2-gang lighting switch		-	-	-	-	-	-	-	-	-	-	-	-	-	-	-	1	-	-	-	-	-	-	-	-	-	-		
	燈位 Lighting point		-	-	-	-	-	-	-	-	-	-	-	-	-	-	-	1	-	-	-	-	-	-	-	-	-	-		

備註：上表 "-" 代表「不提供」或「不適用」  
Note: The symbol "-" as shown in the above table denotes "Not provided" or "Not applicable"

7. 住宅單位機電裝置位置及數量說明表 Schedule for the Location and Number of Mechanical and Electrical Provisions of Residential Units

位置 Location	描述 Description		第1座 Tower 1																											
			5樓至12樓、15樓至23樓 及 25樓至32樓 5/F to 12/F, 15/F to 23/F and 25/F to 32/F															33樓 33/F												
			A	B	C	D	E	F	G	H	J	K	L	M	N	P	Q	A	B	C	D	E	F	G	H	J	K	L	M	
儲物室 Store	雙極開關掣 Double pole switch	適用於抽氣扇 For exhaust fan	-	-	-	-	-	-	-	-	-	-	-	-	-	-	1	-	-	-	-	-	-	-	-	-	-	-		
	13A單位插座連開關掣 13A single socket outlet with switch	一般用途 For general use	-	-	-	-	-	-	-	-	-	-	-	-	-	-	1	-	-	-	-	-	-	-	-	-	-	-		
	冷氣室內機接駁點 Connection point for air conditioning indoor unit		-	-	-	-	-	-	-	-	-	-	-	-	-	-	1	-	-	-	-	-	-	-	-	-	-	-		
露台、工作平台及 空調機平台 Balcony, Utility Platform and AC Platform	燈位 Lighting point		1	1	1	1	1	1	1	1	1	1	1	1	1	1	-	1	1	1	1	1	1	1	1	1	1	1		
	防水雙極開關掣 Weatherproof double pole isolator	適用於冷氣室外機 For air conditioning outdoor unit	1	1	1	1	1	1	1	1	1	1	1	1	1	1	-	1	1	1	1	1	1	1	1	1	1	1		
	去水位 Drain points	適用於雨水去水 For rain water outlet	1	1	1	1	1	1	1	1	1	1	1	1	1	1	-	1	1	1	1	1	1	1	1	1	1	1		
平台 / 私人天台 Flat Roof / Private Roof	燈位 Lighting point		-	-	-	-	-	-	-	-	-	-	-	-	-	-	13	-	-	-	-	-	-	-	-	-	-	-		
	13A防水單位插座 13A weatherproof single socket outlet	一般用途 For general use	-	-	-	-	-	-	-	-	-	-	-	-	-	-	2	-	-	-	-	-	-	-	-	-	-	-		
	防水雙極開關掣 Weatherproof double pole isolator	適用於冷氣室外機 For air conditioning outdoor unit	-	-	-	-	-	-	-	-	-	-	-	-	-	-	2	-	-	-	-	-	-	-	-	-	-	-		
	來及去水位 Water and drain points	適用於鋅盆 For sink	-	-	-	-	-	-	-	-	-	-	-	-	-	-	1	-	-	-	-	-	-	-	-	-	-	-		
	去水位 Drain points	適用於雨水去水 For rain water outlet	-	-	-	-	-	-	-	-	-	-	-	-	-	-	6	-	-	-	-	-	-	-	-	-	-	-		
	防水雙位燈掣 Weatherproof 2-gang lighting switch		-	-	-	-	-	-	-	-	-	-	-	-	-	-	1	-	-	-	-	-	-	-	-	-	-	-		

備註：上表 "-" 代表「不提供」或「不適用」  
Note: The symbol "-" as shown in the above table denotes "Not provided" or "Not applicable"



食水及沖廁水由水務署供應。  
電力由中華電力有限公司供應。  
煤氣由香港中華煤氣有限公司供應。

Potable and flushing water is supplied by Water Supplies Department.  
Electricity is supplied by CLP Power Hong Kong Limited.  
Towngas is supplied by The Hong Kong and China Gas Company Limited.

## 24 地稅 GOVERNMENT RENT

賣方(擁有人)有法律責任繳付住宅物業的地稅直至住宅物業買賣完成日(包括該日)為止。

The Vendor (the owner) is liable for the Government rent of a residential property up to and including the date of the completion of the sale and purchase of that residential property.

## 25 買方的雜項付款 MISCELLANEOUS PAYMENTS BY PURCHASER

1. 在向買方交付住宅物業在空置情況下的管有權時，買方須向賣方(擁有人)補還水、電力及氣體的按金。
2. 在交付時，買方不須向賣方(擁有人)支付清理廢料的費用。
3. 水、電力及氣體的按金及清理廢料的費用的款額於售樓說明書印製日尚未決定。

備註：買方須向管理人而不須向賣方(擁有人)繳付水、電力及氣體的按金及清理廢料的費用。

1. On the delivery of the vacant possession of the residential property to the purchaser, the purchaser is liable to reimburse the vendor (the owner) for the deposits for water, electricity and gas.
2. On that delivery, the purchaser is not liable to pay to the vendor (the owner) a debris removal fee.
3. The amount of deposits for water, electricity and gas and debris removal fee is yet to be ascertained at the date on which the sales brochure is printed.

Note : The purchaser should pay to the manager instead of the vendor (the owner) the deposits for water, electricity and gas and the debris removal.

## 26 欠妥之處的保養責任期 DEFECT LIABILITY WARRANTY PERIOD

按買賣合約的規定，凡售出物業或於買賣合約列出裝設於物業內的裝置、裝修物料或設備有欠妥之處，而該欠妥之處並非由買方行為或疏忽造成，則賣方在接獲買方在買賣成交日期後的6個月內送達的書面通知後，須於合理地切實可行的範圍內，盡快自費作出補救。

As provided in the agreement for sale and purchase, the vendor shall, at its own cost and as soon as reasonably practicable after receipt of a written notice served by the purchaser within 6 months after the date of completion of the sale and purchase, remedy any defects to the property sold, or the fittings, finishes or appliances incorporated into the property as set out in the agreement for sale and purchase, caused otherwise than by the act or neglect of the purchaser.

不適用。

Not applicable.

沒有向政府申請中而未獲批准的批地文件的修訂。

There is no on-going application to the Government for modification of the land grant which is not yet granted.

29

申請建築物總樓面面積寬免的資料  
INFORMATION IN APPLICATION FOR CONCESSION ON GROSS FLOOR AREA (GFA) OF BUILDING

獲寬免總樓面面積的設施分項

於印製售樓說明書前呈交予並已獲建築事務監督批准的一般建築圖則上有關總樓面面積寬免的分項的最新資料，請見下表。如印製售樓說明書時尚未呈交最終修訂圖則予建築事務監督，則有(＃)號的資料可以由認可人士提供的資料作為基礎。直至最終修訂圖則於發出佔用許可證前呈交予並獲建築事務監督批准前，以下分項資料仍可能有所修改。

Breakdown of GFA Concessions Obtained for All Features

Latest information on breakdown of GFA concessions as shown on the general building plans submitted to and approved by the Building Authority (BA) prior to the printing of the sales brochure is tabulated below. Information marked (＃) may be based on information provided by the authorized person if the sales brochure is printed prior to submission of the final amendment plans to the BA. The breakdown of GFA concessions may be subject to further changes until final amendment plans are submitted to and approved by the BA prior to the issuance of the occupation permit for the development.

根據《建築物(規劃)規例》第23(3)(b)條不計算的總樓面面積 Disregarded GFA under Building (Planning) Regulations 23(3)(b)		面積(平方米) Area (m²)
1. (＃)	停車場及上落客貨地方(公共交通總站除外) Carpark and loading / unloading area excluding public transport terminus	137.800
2.	機房及相類設施 Plant rooms and similar services	
2.1	所佔面積受相關《認可人士、註冊結構工程師及註冊岩土工程師作業備考》(《作業備考》)或規例限制的強制性設施或必要機房，例如升降機機房、電訊及廣播設備室(訊播室)、為流動通訊接達設施而設的訊播室、天台電訊設備室、中層電訊設備室、垃圾房等 Mandatory feature or essential plant room, area of which is limited by respective Practice Notes for Authorized Persons, Registered Structural Engineers and Registered Geotechnical Engineers (PNAP) or regulation such as lift machine room, telecommunications and broadcasting (TBE) room, TBE room for access facilities for mobile services, rooftop telecommunications equipment room, intermediate telecommunications equipment room, refuse storage chamber, etc.	358.344
2.2 (＃)	所佔面積不受任何《作業備考》或規例限制的強制性設施或必要機房，例如僅由消防裝置及設備佔用的房間、電錶房、電力變壓房、食水及鹹水缸等 Mandatory feature or essential plant room, area of which is NOT limited by any PNAP or regulation such as room occupied solely by fire services installations (FSI) and equipment, meter room, transformer room, potable and flushing water tank, etc.	2291.129
2.3	非強制性或非必要機房，例如空調機房、送風櫃房等 Non-mandatory or non-essential plant room such as air-conditioning (A/C) plant room, air handling unit (AHU) room, etc.	60.895

根據聯合作業備考第1及第2號提供的環保設施 Green Features under Joint Practice Notes 1 and 2		面積(平方米) Area (m²)
3.	露台 Balcony	845.000
4.	加闊的公用走廊及升降機大堂 Wider common corridor and lift lobby	不適用 Not Applicable
5.	公用空中花園 Communal sky garden	不適用 Not Applicable
6.	隔聲鰭 Acoustic fin	不適用 Not Applicable
7.	翼牆、捕風器及風斗 Wing wall, wind catcher and funnel	不適用 Not Applicable
8.	非結構預製外牆 Non-structural prefabricated external wall	125.548
9.	工作平台 Utility platform	633.750
10.	隔音屏障 Noise barrier	不適用 Not Applicable
適意設施 Amenity Features		面積(平方米) Area (m²)
11.	管理員宿舍、供保安人員和管理處員工使用的櫃位、辦事處、貯物室、警衛室和廁所，以及業主立案法團辦事處 Caretaker's quarters, counter, office, store, guard room and lavatory for watchman and management staff and owners' corporation office	8.827
12.	住戶康樂設施，包括僅供康樂設施使用的中空空間、機房、游泳池的濾水機房、有蓋人行道等 Residential recreational facilities including void, plant room, swimming pool filtration plant room, covered walkway, etc. serving solely the recreational facilities	1254.129

適意設施 Amenity Features		面積(平方米) Area (m²)
13.	有蓋園景區及遊樂場地 Covered landscaped and play area	623.766
14.	橫向屏障 / 有蓋人行道及花棚 Horizontal screen / covered walkway and trellis	不適用 Not Applicable
15.	擴大升降機槽 Larger lift shaft	85.762
16.	煙囪管道 Chimney shaft	不適用 Not Applicable
17.	其他非強制性或非必要機房，例如鍋爐房、衛星電視共用天線房 Other non-mandatory or non-essential plant room, such as boiler room, satellite master antenna television (SMATV) room	不適用 Not Applicable
18. (#)	強制性設施或必要機房所需的管槽、氣槽及垂直立管 Pipe duct, air duct and vertical riser for mandatory feature or essential plant room	813.093
19.	非強制性設施或非必要機房所需的管槽及氣槽 Pipe duct, air duct for non-mandatory or non-essential plant room	2.242
20.	環保系統及設施所需的機房、管槽及氣槽 Plant room, pipe duct, air duct for environmentally friendly system and feature	不適用 Not Applicable
21.	複式住宅單位及洋房的中空空間 Void in duplex domestic flat and house	不適用 Not Applicable
22.	遮陽篷及反光罩 Sunshade and reflector	不適用 Not Applicable
23. (#)	伸出式花槽及小型伸出物，例如空調機箱、空調機平台、窗檻及伸出的窗台 Projecting planters and minor projection such as A/C box, A/C platform, window cill and projecting window	不適用 Not Applicable
24.	《作業備考》APP-19第3(b)及(c)段沒有涵蓋的其他伸出物，如空調機箱及空調機平台，及維修通道 Other projection such as A/C box and A/C platform not covered in paragraph 3(b) and (c) of PNAP APP-19, and maintenance walkway	不適用 Not Applicable

其他項目 Other Exempted Items		面積(平方米) Area (m²)
25. (#)	庇護層，包括庇護層兼空中花園 Refuge floor including refuge floor cum sky garden	不適用 Not Applicable
26.	大型伸出 / 外懸設施下的有蓋地方 Covered area under large projecting / overhanging feature	不適用 Not Applicable
27.	公共交通總站 Public transport terminus	不適用 Not Applicable
28. (#)	共用構築物及公用樓梯 Party structure and common staircase	不適用 Not Applicable
29. (#)	僅供獲接納不計入總樓面面積的樓層使用的樓梯、升降機槽及垂直管道的水平面積 Horizontal area of staircase, lift shaft and vertical duct solely serving floor accepted as not being accountable for GFA	121.852
30.	公眾通道 Public passage	不適用 Not Applicable
31.	有蓋的後移部分 Covered set back area	不適用 Not Applicable
額外總樓面面積 Bonus GFA		面積(平方米) Area (m²)
32.	額外總樓面面積 Bonus GFA	不適用 Not Applicable
根據聯合作業備考(第8號)提供的額外環保設施 Additional Green Features under Joint Practice Note (No. 8)		面積(平方米) Area (m²)
33.	採用「組裝合成」建築法的樓宇 Buildings adopting Modular Integrated Construction	不適用 Not Applicable

註：上述表格是根據屋宇署所發出的《認可人士、註冊結構工程師及註冊岩土工程師作業備考》ADM-2規定的要求而制訂的。屋宇署會按實際需要不時更改有關要求。

Note: The above table is based on the requirements as stipulated in the Practice Note for Authorized Persons, Registered Structural Engineers and Registered Geotechnical Engineers ADM-2 issued by the Buildings Department. The Buildings Department may revise such requirements from time to time as appropriate.



29

申請建築物總樓面面積寬免的資料  
INFORMATION IN APPLICATION FOR CONCESSION ON GROSS FLOOR AREA (GFA) OF BUILDING

有關建築物的環境評估  
Environmental Assessment of the Building

***This project has been rated as Provisional Pre-requisites Achieved under BEAM Plus New Buildings V2.0.***

此項目於綠建環評新建建築 2.0 版認證，獲暫定為「先決條件達標」。

期數的公用部分的預計能量表現或消耗  
Estimated Energy Performance or Consumption for the Common Parts of the Phase

於印製售樓說明書前呈交予建築事務監督期數的公用部分的預計能量表現或消耗的最近期資料：  
Latest information on the estimated energy performance or consumption for the common parts of the Phase as submitted to the Building Authority prior to the printing of the sales brochure:

第 I 部分 Part I	
提供中央空調 Provision of Central Air Conditioning	否 No
提供具能源效益的設施 Provision of Energy Efficient Features	是 Yes
擬安裝的具能源效益的設施 Energy Efficient Features proposed	1.高效能冷氣機 HIGH COP A/C UNITS  2.高效能照明系統 HIGH EFFICIENT LUMINARIES

第 II 部分：擬興建樓宇/部分樓宇預計每年能源消耗量 <sup>(註腳1)</sup> Part II: The predicted annual energy use of the proposed building / part of building <sup>(Note 1)</sup>						
發展項目類型 Type of Development	位置 Location	使用有關裝置的內部樓面面積(平方米) Internal Floor Area Served (m <sup>2</sup> )	基線樓宇 <sup>(註腳2)</sup> 每年能源消耗量 Annual Energy Use of Baseline Building <sup>(Note 2)</sup>		擬興建樓宇每年能源消耗量 Annual Energy Use of Proposed Building	
			電力 千瓦小時 / 平方米 / 年 Electricity kWh / m <sup>2</sup> / annum	煤氣 / 石油氣 用量單位 / 平方米 / 年 Town Gas / LPG unit / m <sup>2</sup> / annum	電力 千瓦小時 / 平方米 / 年 Electricity kWh / m <sup>2</sup> / annum	煤氣 / 石油氣 用量單位 / 平方米 / 年 Town Gas / LPG unit / m <sup>2</sup> / annum
住用發展項目(不包括酒店) Domestic Development (excluding Hotel)	有使用中央屋宇裝備裝置 <sup>(註腳3)</sup> 的部份 Area served by central building services installation <sup>(Note 3)</sup>	26964	193.7	6.1	153.2	3.5

註腳：1. 一般而言，一棟樓宇的預計"每年能源消耗量"愈低，其節約能源的效益愈高。如一棟樓宇預計的"每年能源消耗量"低於該樓宇的"基線樓宇每年能源消耗量"，則代表預計該樓宇的能源應用較其基線樓宇有效，削減幅度愈大則代表有關樓宇能源節約的效益愈高。

- 預計每年能源消耗量[以耗電量(千瓦小時 / 平方米 / 年)及煤氣 / 石油氣消耗量(用量單位 / 平方米 / 年)計算]，指將發展項目的每年能源消耗總量除以使用有關裝置的內部樓面面積所得出的商，其中：-
- (a) "每年能源消耗量"與新建樓宇 BEAM Plus 標準(現行版本)中的「年能源消耗」具有相同涵義；及
  - (b) 樓宇、空間或單位的"內部樓面面積"，指外牆及 / 或共用牆的內壁之內表面起量度出來的樓面面積。
2. "基準樓宇"與新建樓宇 BEAM Plus 標準(現行版本)中的"基準建築物模式(零分標準)"具有相同涵義。
3. "中央屋宇裝備裝置"與機電工程署發出的《屋宇裝備裝置能源效益實務守則》中的涵義相同。

Notes: 1. In general, the lower the estimated "Annual Energy Use" of the building, the more efficient of the building in terms of energy use. For example, if the estimated "annual energy use of proposed building" is less than the estimated "annual energy use of baseline building", it means the predicted use of energy is more efficient in the proposed building than in the baseline building. The larger the reduction, the greater the efficiency.

- The predicted annual energy use, in terms of electricity consumption (kWh / m<sup>2</sup> / annum) and town gas/LPG consumption (unit / m<sup>2</sup> / annum), of the development by the internal floor area served, where:
- (a) "total annual energy use" has the same meaning of "annual energy use" in the BEAM Plus New Buildings (current version); and
  - (b) "internal floor area", in relation a building, a space or a unit means the floor area of all enclosed space measured to the internal faces of enclosing external and / or party walls.
2. "Baseline Building" has the same meaning as "Baseline Building Model (zero-credit benchmark)" in the BEAM Plus New Buildings (current version).
3. "Central Building Services Installation" has the same meaning as that in the Code of Practice for Energy Efficiency of Building Services Installation issued by the Electrical and Mechanical Services Department.

第 III 部分：以下裝置乃按機電工程署公布的相關實務守則設計 Part III: The following installations are designed in accordance with the relevant Codes of Practices published by the Electrical & Mechanical Services Department (EMSD)			
裝置類型 Type of Installations	是 Yes	否 No	不適用 Not applicable
照明裝置 Lighting Installations	✓	-	-
空調裝置 Air Conditioning Installations	✓	-	-
電力裝置 Electrical Installations	✓	-	-
升降機及自動梯的裝置 Lift & Escalator Installations	✓	-	-
以總能源為本的方法 Performance-based Approach	-	-	✓

### 1. 第2期的施工

第2期的施工可能對期數內住宅單位之享用，諸如景觀、噪音、沙塵及/或周邊環境的其他方面，造成重大影響。

### 2. 放置室外冷氣機

部分室外冷氣機放置在(i)構成住宅單位一部分的組合露台及工作平台上或內部及(ii)私人平台上或內部(iii)私人天台上或內部。室外冷氣機的放置可能對期數內的住宅單位的享用，諸如熱氣及噪音或其他方面造成影響。有關室外冷氣機的位置，請參閱本售樓說明書的「期數的住宅物業的樓面平面圖」。

### 3. 建築裝飾

期數部分住宅單位外牆設有建築裝飾。此等建築裝飾可能對部分住宅單位的景觀造成影響。有關建築裝飾的位置，請參閱本售樓說明書的「期數的住宅物業的樓面平面圖」。

### 4. 照明

期數部分住宅單位的外牆及/或建築裝飾裝設外牆裝飾燈及發展項目1樓及2樓的外牆裝設有招牌伸展至落山道。該等裝飾燈及招牌可能不時開啟。該等照明可能對期數部分住宅單位的享用，諸如景觀、光及對周邊環境的其他方面造成影響。

### 5. 大廈保養系統操作

(a) 根據公契及管理協議，管理人有權進入建有私人平台及/或私人天台的住宅單位(不論是否連同管理人的代理、測量師、工人及其他人士，及是否攜帶用具、工具及物料)操作大廈保養系統，包括但不限於在毗鄰構成住宅單位一部分的私人天台及/或私人平台的公用地方與設施的周邊外牆的托架錨固吊船或其他類似裝置，及/或於構成住宅單位一部分的私人天台及/或私人平台停泊吊船或其他類似裝置，以便清潔、檢查、保養及/或維修外牆、玻璃幕牆及公用地方與設施。

(b) 在管理人安排為外牆(包括玻璃幕牆結構以及公用地方與設施)進行定期及特別安排的檢查、清潔、保養及/或維修期間，大廈保養系統包括但不限於吊船或其他類似裝置(不論永久或臨時裝置)可能會安裝及/或停泊在住宅單位的私人平台及/或私人天台上及於住宅單位的私人平台及/或私人天台的上空以及窗戶外及/或住宅單位的組合露台及工作平台外操作。

### 6. 喉管


部分喉管(包圍於建築裝飾內或外露)設於期數部分住宅單位的外牆及/或毗鄰私人平台及/或私人天台及/或組合露台及工作平台。部分住宅單位的景觀可能因此受到影響。有關該等喉管及建築裝飾相關的位置，請參閱期數最新經批准的建築圖則。

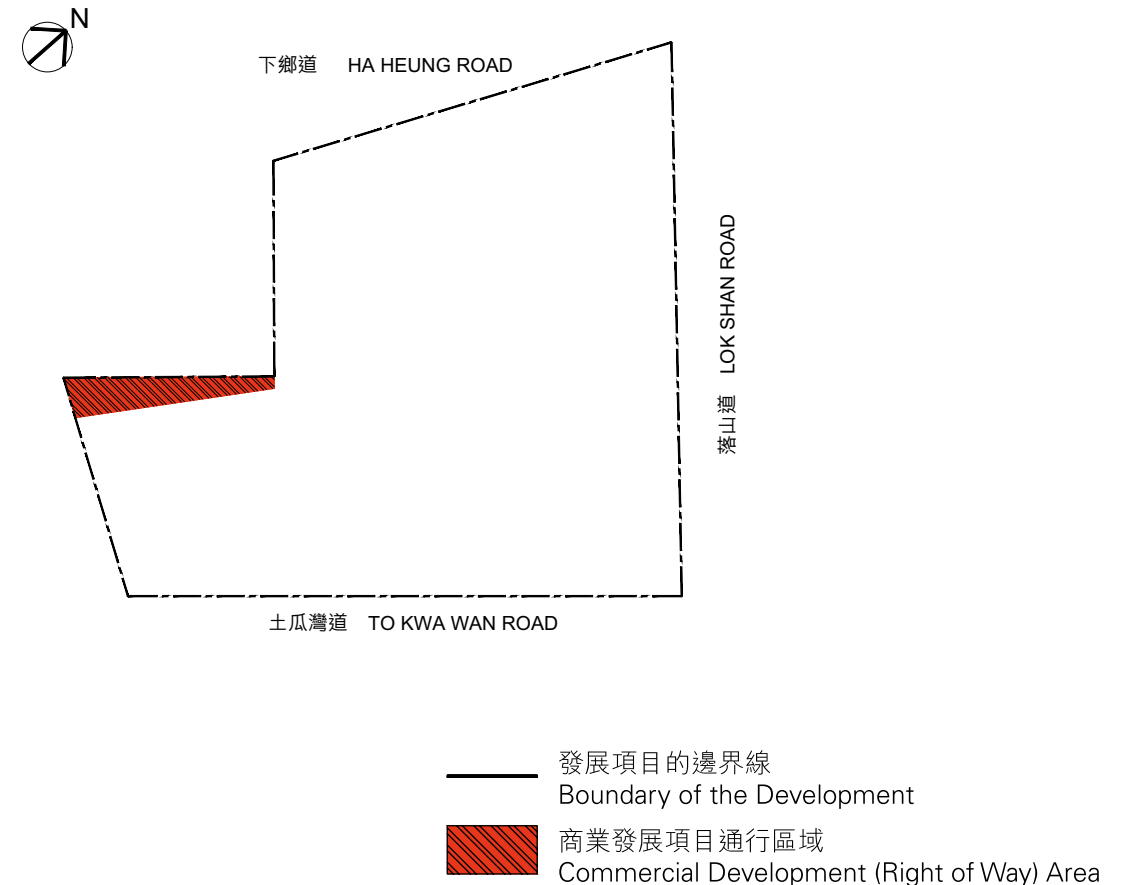
### 7. 綠化範圍

根據公契及管理協議，位於期數2樓的綠化範圍被指定為並構成住宅公用地方一部分。期數的每一住宅單位的擁有人均需分擔管理及維修構成住宅公用地方一部分的綠化範圍的費用。

### 8. 商業發展項目通行區域

根據屋宇署於2025年7月14日批准的經修訂一般建築圖則(參考編號BD 2/4086/20(DPU))，地下某部分面積標記為供毗鄰的九龍內地段4148號C段上的建築物的擁有人通行。根據公契及管理協議，該通行區域構成商業發展項目一部分及受制於九龍內地段4148號C段的擁有人及佔用人免費及無阻礙的通行權。

僅為識別目的，該商業發展項目通行區域的位置以  顯示在本部分最後的圖則上。



備註：不按比例，圖則僅供識別用途。

註：除非本售樓說明書另有定義，本有關資料內使用的詞彙與該詞彙在公契及管理協議中的涵義相同。

## 1. Construction of Phase 2

The construction of Phase 2 may materially affect the enjoyment of the residential units in the Phase in terms of views, noise, dust and/or other aspects of the surrounding environment.

## 2. Placement of outdoor air-conditioning units

Some outdoor air-conditioning units are placed on the areas provided on or within (i) the combined balconies and utility platforms forming part of residential units and (ii) the private flat roofs. (iii) Private Roof. The placement of the outdoor air-conditioning units may affect the enjoyment of the residential units of the Phase in terms of heat and noise or other aspects. For the locations of the outdoor air-conditioning units, please refer to the "Floor Plans of Residential Properties in the Phase" in this sales brochure.

## 3. Architectural Features

Some architectural features are installed outside some residential units of the Phase. The views of some residential units may be affected by such architectural features. For locations of the architectural features, please refer to "Floor Plans of Residential Properties in the Phase" in this sales brochure.

## 4. Lighting

Facade lighting is installed on the external walls and/or architectural features of some residential units of the Phase and a signage is installed outside the external walls of the first and second floors of the Development projecting out over Lok Shan Road. These lighting and signage may be turned on from time to time. The illumination of these lighting may affect the enjoyment of some residential units in the Phase in terms of views, lighting and other aspects of the surrounding environment.

## 5. Operation of Building Maintenance System

- (a) Under the Deed of Mutual Covenant and Management Agreement, the Manager shall have the right to access into those residential units consisting of private flat roof(s) and/or private roof(s) (with or without the Manager's agents, surveyors, workmen and others and with or without other appliances, equipment and materials) for operating the building maintenance system, including but limited to the anchoring of the gondola or likewise equipment at the brackets located at the building perimeter along such part of the Common Areas and Facilities adjacent to the private roof and/or private flat roof forming part of a residential unit and/or the resting of the gondola or likewise equipment on the private roofs and/or private flat roofs forming part of any residential unit, for cleaning, inspecting, maintaining and/or repairing the external wall, curtain wall and the Common Areas and Facilities.
- (b) During regular and specially arranged inspections, cleaning, maintenance and/or repairing of the external walls (including the curtain wall structures and the Common Areas and Facilities) as arranged by the Manager, the building maintenance systems including but not limited to gondola(s) or similar equipment (whether permanent or temporary equipment) may be installed and/or rested on the private flat roof(s) and/or private roof(s) of the residential units and operated in the air space directly above the private flat roof(s) and/or private roof(s) of the residential units as well as outside windows and/or combined balcony(ies) and utility platform(s) of the residential units.

## 6. Pipes


Some pipes (enclosed by architectural features or exposed) are located on the external walls and/or adjacent to and/or on the private flat roofs and/or private roofs and/or combined balconies and utility platforms of some residential units of the Phase. It is possible that the views of some residential units may be affected by these pipes and related architectural features. For locations of such pipes and architectural features, please refer to the latest approved building plans of the Phase.

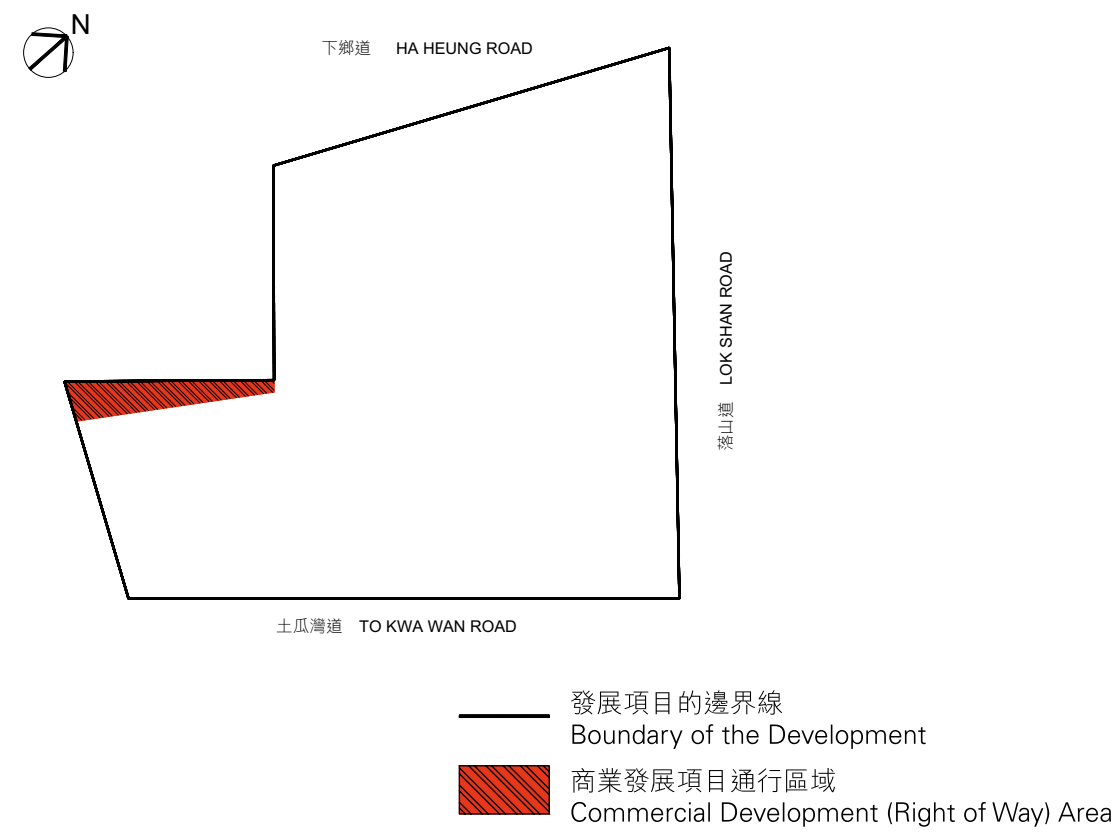
## 7. Greenery Areas

Under the Deed of Mutual Covenant and Management Agreement, greenery areas on 2/F of the Phase are designated as and form part of the Residential Common Areas. The owner of each residential unit in the Phase is obliged to contribute towards the costs of management and maintenance of such greenery areas which form part of the Residential Common Areas.

## 8. Commercial Development (Right of Way) Area

Under the general building plan Ref. No. BD 2/4086/20(DPU) as revised and approved by the Building Authority on 14th July 2025, an area on G/F of the development is marked as a right of way for owners of the adjoining building on Section C of Kowloon Inland Lot No.4148. Under the Deed of Mutual Covenant and Management Agreement of the development, such right of way forms part of the Commercial Development and shall be subject to the free and uninterrupted right of way for the owners and occupiers for the time being of Section C of Kowloon Inland Lot No.4148 to go pass and repass over and along.

For the purpose of identification only, the location of the Commercial Development (Right of Way) Area is shown and coloured  on the plan at the end of this Section.



Note: Not to scale. This plan is for identification purpose only.

Remark: Unless otherwise defined in this sales brochure, the capitalized terms used in this Relevant Information shall have the same meaning of such terms in the Deed of Mutual Covenant and Management Agreement.



賣方就期數指定的互聯網網站的網址：[www.highwood.com.hk](http://www.highwood.com.hk)

The Address of the Website Designated by the Vendor for the Phase : [www.highwood.com.hk](http://www.highwood.com.hk)

1. 期數及其周邊地區日後可能出現改變。
2. 本售樓說明書印製日期：2025年9月3日。

1. There may be future changes to the phase and the surrounding areas.
2. Date of printing of this Sales Brochure : 3rd September 2025.

檢視 / 修改日期 Examination / Revision Date	所作修改 Revision Made	
	頁次 Page Number	所作修改 Revision Made
2025年9月11日 11th September 2025	33, 35, 37	修訂期數的住宅物業的樓面平面圖 Revise floor plans of residential properties in the phase
	52	修訂公契的摘要 Revise summary of deed of mutual covenant
2025年12月9日 9th December 2025	13	更新期數的設計的資料。 Update the information on design of the Phase.
	22, 23	更新關乎發展項目的分區計劃大綱圖。 Update the outline zoning plan etc. relating to the developmemnt.
	64	更新期數中的公用設施的資料。 Update the information on common facilities in the phase.
	108, 109	更新申請建築物總樓面面積寬免的資料。 Update the information in application for concession on gross floor area (GFA) of building.



此版乃特意留白

This page is deliberately left blank

此版乃特意留白

This page is deliberately left blank

此版乃特意留白

This page is deliberately left blank

此版乃特意留白

This page is deliberately left blank

此版乃特意留白

This page is deliberately left blank

此版乃特意留白

This page is deliberately left blank

此版乃特意留白

This page is deliberately left blank





